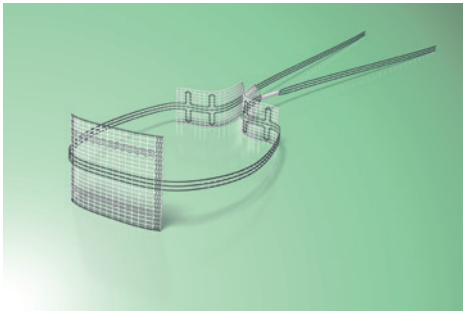


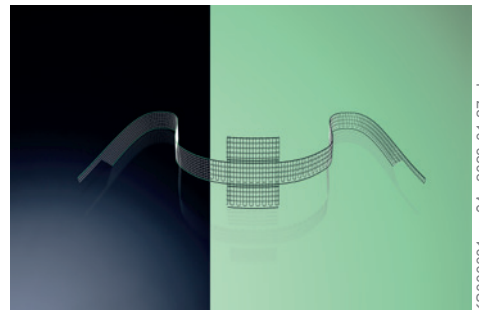
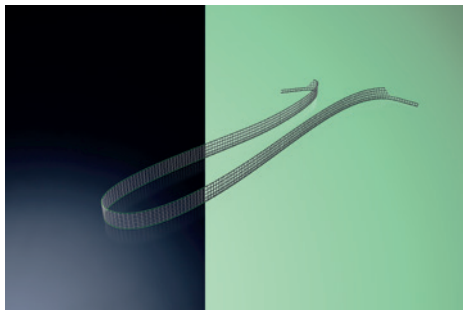
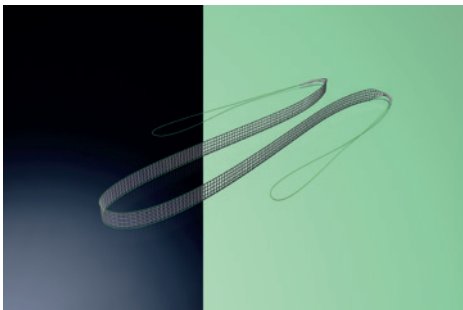
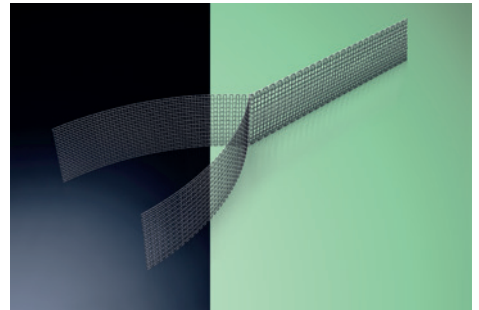
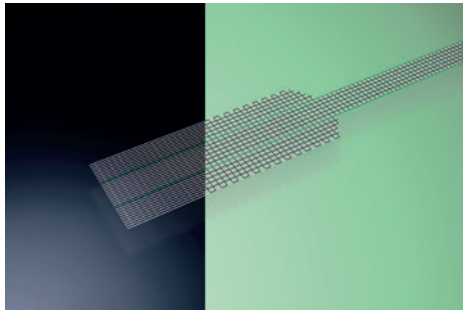
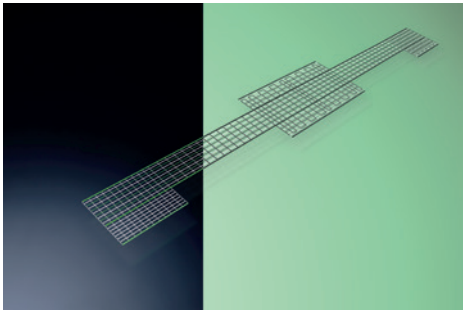
# DynaMesh<sup>®</sup>

For Every Indication a Specific Solution



made  
in  
Germany

Tailored Implants  
Made of **PVDF**



## Profile and Competences



FEG Textiltechnik Forschungs- und Entwicklungsgesellschaft mbH (FEG) was established in Aachen in 1992 and since then has gained a reputation for exceptional innovations in the field of textile technology.

The company's dedicated and highly qualified staff, in-house research and development capacities as well as intelligent production facilities combine to make FEG Textiltechnik today's leading manufacturer of textile surgical implants in Germany. Under the brand name **DynaMesh**<sup>®</sup>, an internationally protected trademark, FEG's award-winning implants are successfully marketed in numerous countries around the world.

Constant and close contact with major scientific, medical and technical institutions ensures that FEG's high-quality products meet the latest requirements in terms of patient comfort and surgical handling. The sophisticated quality management system at FEG Textiltechnik is fully certified to DIN EN ISO 13485 for the manufacture of medical devices. All of FEG's products are CE approved (CE 0123) and are approved under relevant national regulations.

Focusing on its core competences and expertise in textile implants, FEG Textiltechnik will continue to set technical benchmarks in the future.

# DynaMesh<sup>®</sup>

## Milestones

1992 Founding of:



2003 Certification of:



2011 Development of MRI-visible technology



2014 New 4,200m<sup>2</sup> offices & production plant



2020 Additional 600m<sup>2</sup> production/storage capacity



1994 Active in medical technology

2004 First implant for the surgical treatment of hernias

2005 First implant for the surgical treatment of female urinary incontinence

2006 First implant for the surgical treatment of female pelvic organ prolapse

2007 First implant for the surgical treatment of parastomal hernias

2008 First implant for the surgical treatment of male urinary incontinence

2016 First implant for the surgical treatment of hiatal hernias

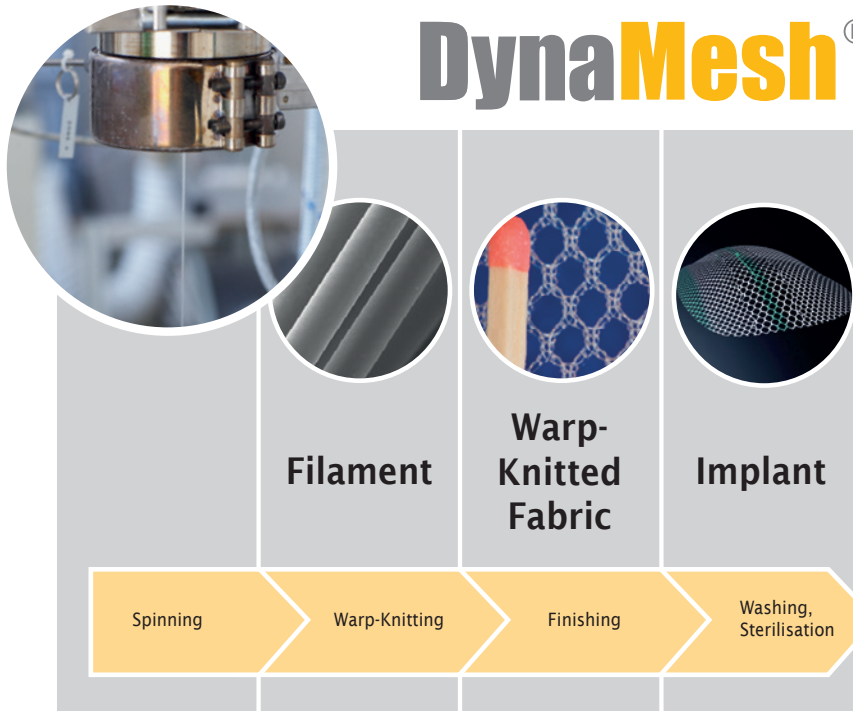
### Business Fields:

- Implants for the surgical treatment of:
  - Hernias
  - Female Pelvic Organ Prolapse
  - Female Urinary Incontinence
  - Male Urinary Incontinence
- Sales in over 50 countries
- More than 70 employees



# Implants 'made in Germany'

## DynaMesh<sup>®</sup>



From Thread to Implant:  
Full quality control  
along the entire  
production chain.

Development and  
manufacturing in  
Aachen, Germany



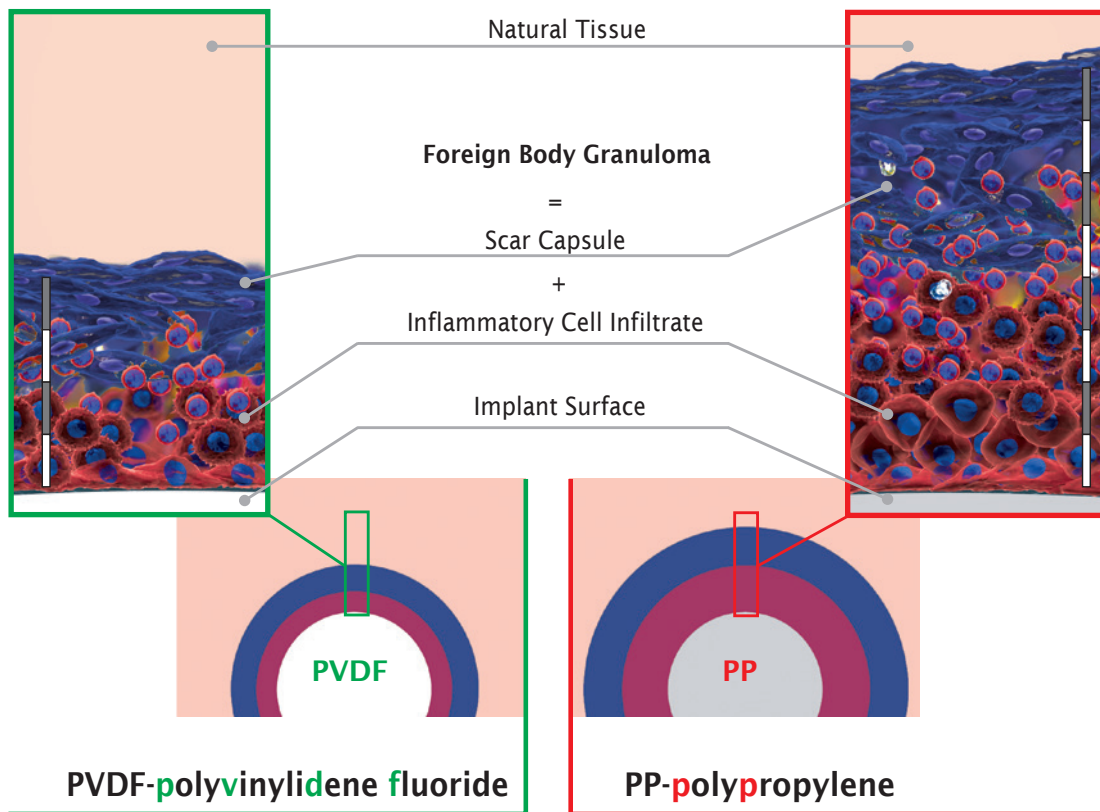


# Biocompatibility

PVDF mesh structures have good biocompatibility (assessed according to ISO 10993) and show significantly lower granuloma formation (scar tissue) [1<sup>A</sup>, 2<sup>A</sup>, 4<sup>A</sup>, 68<sup>A</sup>, 100<sup>B</sup>]. Therefore, the risk of undesirable foreign body reactions is minimised.

## Cross-Sectional View

A comparison of different granuloma thicknesses



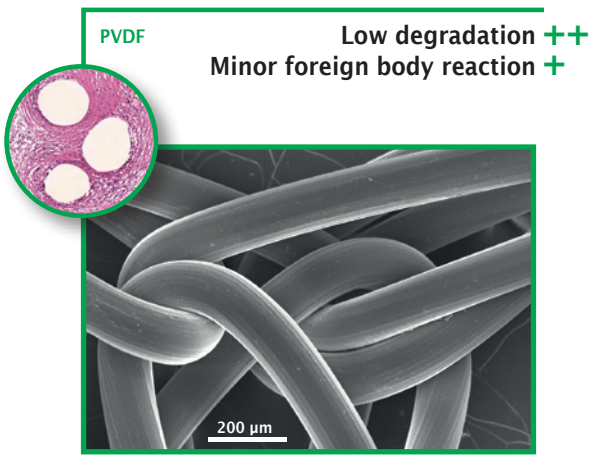
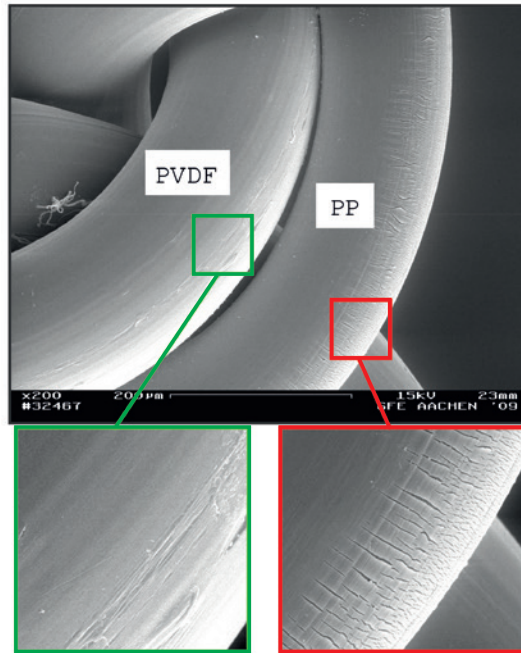
[#] Reference "#" (see "References")  
 [#<sup>A</sup>] Reference "#" (see "References"),  
 "A": limitation "animal trial"  
 [#<sup>B</sup>] Reference "#" (see "References"),  
 "B": limitation "in-vitro trial"

Vi001 de	DynaMesh® Implantate - Animation: Fremdkörperreaktion - Vergleich zwischen PVDF und PP <a href="https://de.dyna-mesh.com/Vi001de">https://de.dyna-mesh.com/Vi001de</a>	
Vi001 en	DynaMesh® Implants - Animation: Foreign Body Reaction - Comparison of PVDF and PP <a href="https://de.dyna-mesh.com/Vi001en">https://de.dyna-mesh.com/Vi001en</a>	

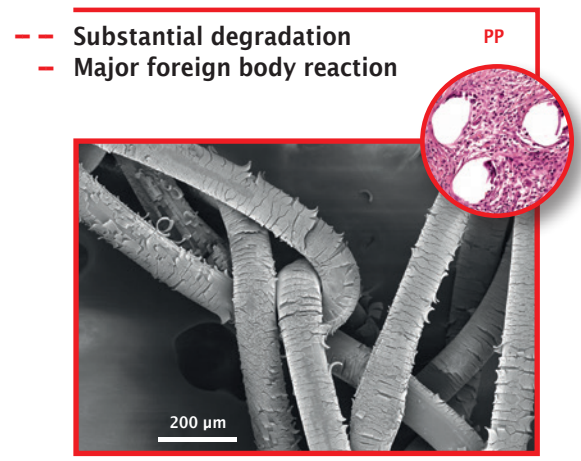
# Ageing Resistance

PVDF has been used as a surgical suture material for many decades with great success, even in the most demanding areas of application such as ophthalmology and cardiology [91].

Long-term data with observation periods of up to seven years prove that: The condition of the PVDF surface remains unchanged, filaments are still stable, nothing becomes brittle [101,2<sup>A</sup>,5<sup>B</sup>,27<sup>A</sup>,52<sup>B</sup>,93<sup>A</sup>].



**PVDF-polyvinylidene fluoride**



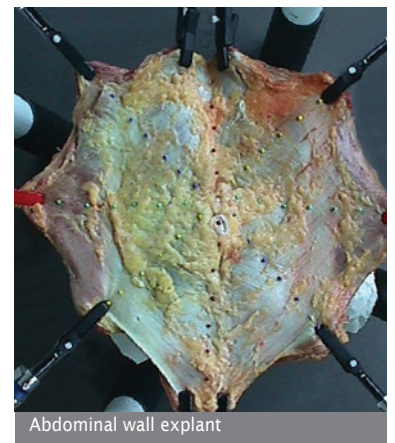
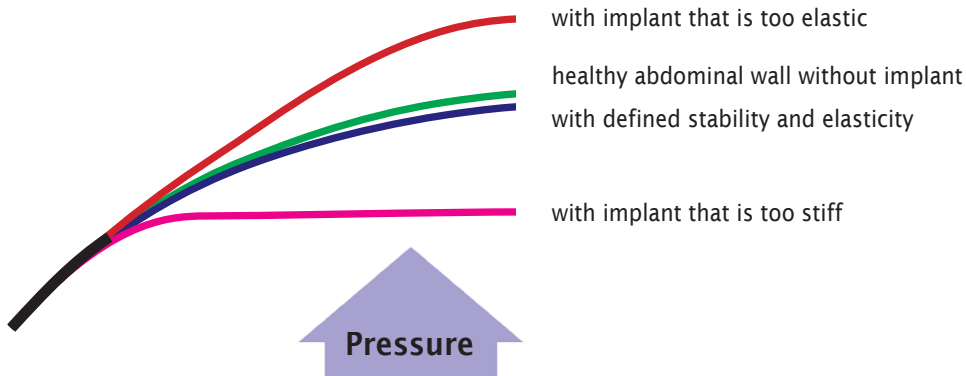
**PP-polypropylene**

[#] Reference "#" (see "References")  
 [#<sup>A</sup>] Reference "#" (see "References"), "A": limitation "animal trial"  
 [#<sup>B</sup>] Reference "#" (see "References"), "B": limitation "in-vitro trial"

## Dynamometry

Textile implants must reinforce tissue. They have to cushion different forces - including the extreme stresses associated with coughing, sneezing and laughing. What is needed therefore, is a good interaction between stability and elasticity.

### The behaviour of abdominal walls with different mesh implants under load

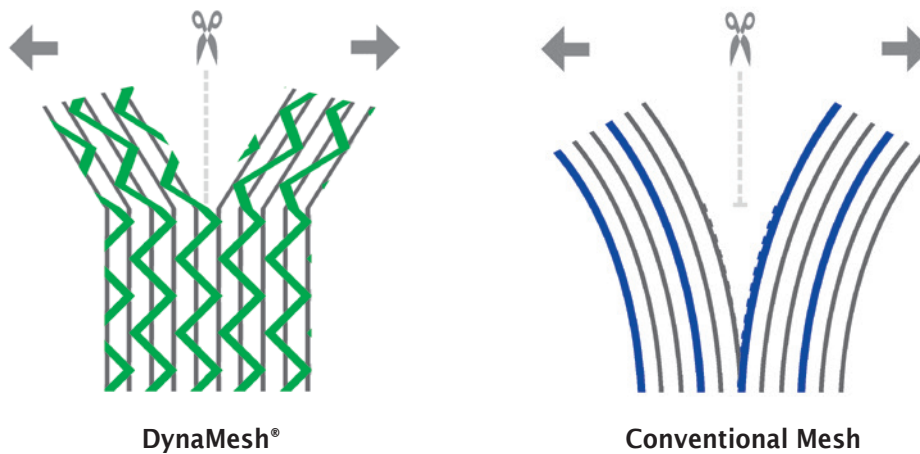


A study of explanted abdominal walls (source: Aachen University Hospital, Germany)



## Tear Propagation Resistance

The multiple meshing technique in warp-knitted\* DynaMesh® structures minimises the risk of the zipper effect (once torn, the structure tears further).  
The load-specific adapted tear resistance is one of the key properties of DynaMesh® implants.



DynaMesh®

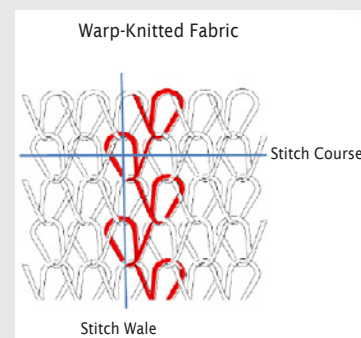
Conventional Mesh

DynaMesh® products are not woven or conventionally knitted, but warp-knitted\*.

This technology, unlike any other, makes it possible to make specific variations in the shape and structure of a textile implant, which means that we can construct features with different characteristics in different places within the structure. It is impossible to achieve a more accurate adaptation of implants to the relevant indication.

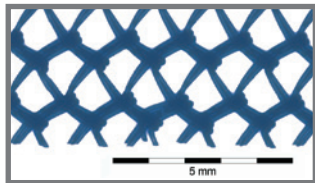
### \*Warp-Knitted Fabric

Warp-knitted fabrics are a type of knitted fabric. They are produced industrially on warp-knitting machines via stitch formation from thread systems.

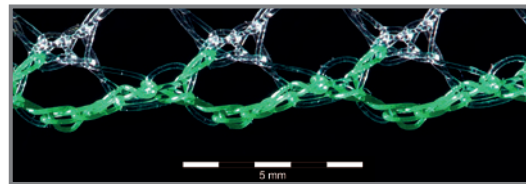


## Specially Warp-knitted Selvedges

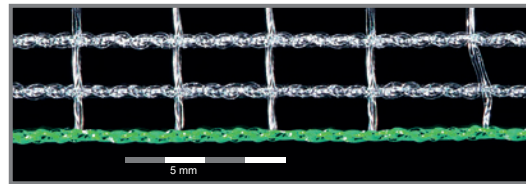
DynaMesh® products are not simply cut from a flat piece of mesh.  
Special warp-knitting machines produce smooth selvedges  
(no 'sawtooth' edges!).



Conventional Mesh

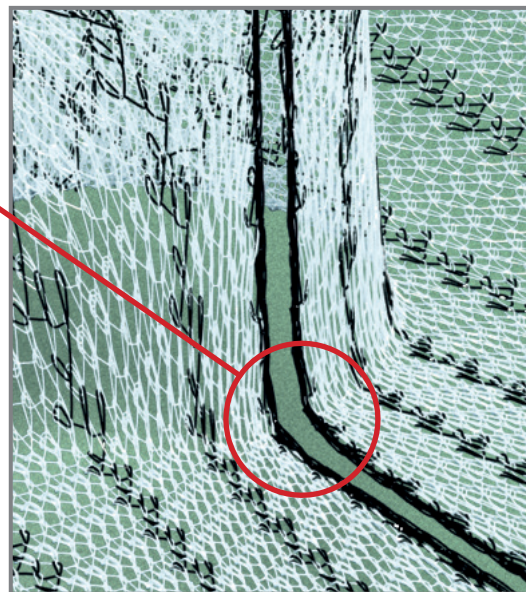


**DynaMesh®-LICHTENSTEIN**



**DynaMesh®-SIS soft**

Also in three-dimensionally  
shaped implants

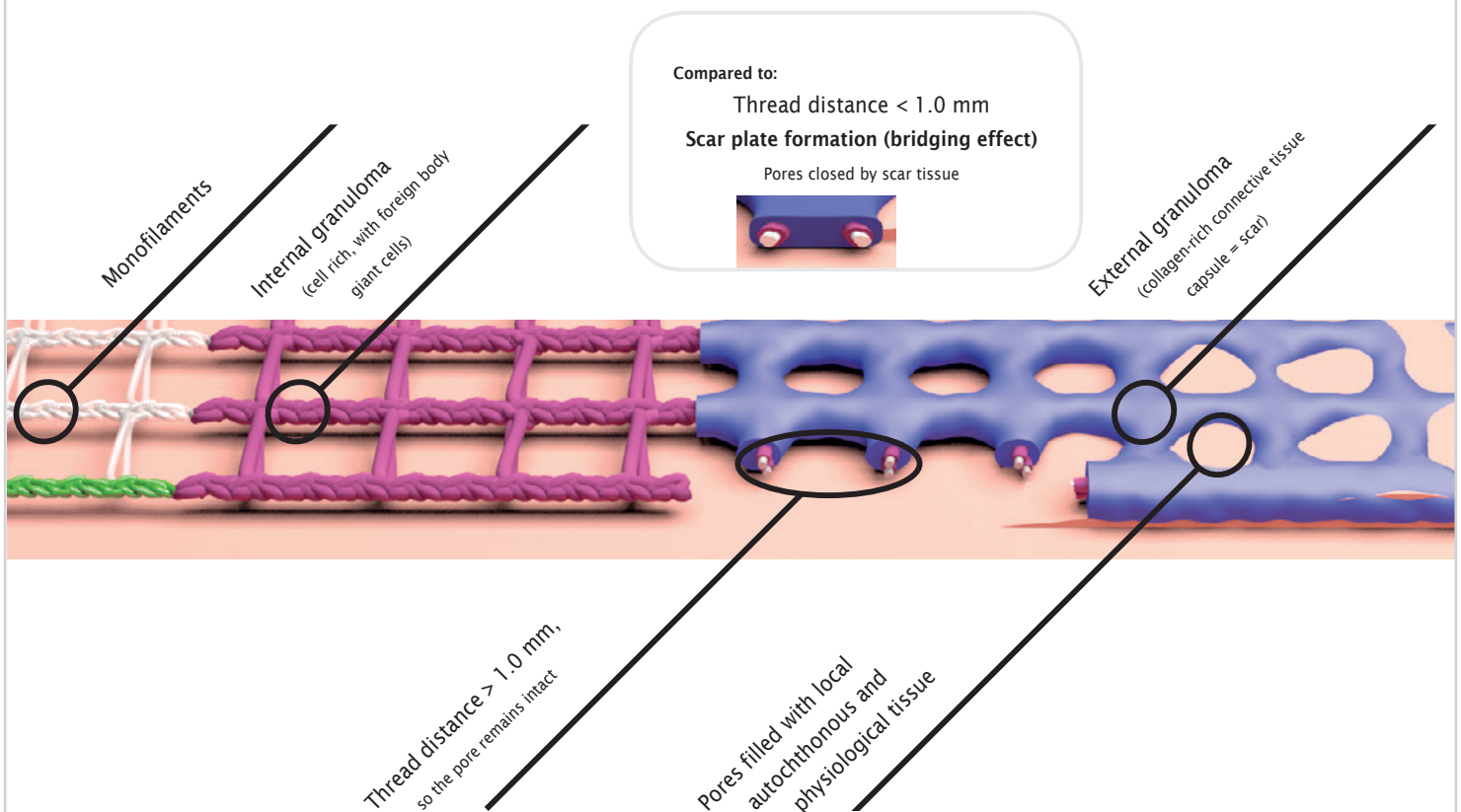


**DynaMesh®-IPST-R visible**

## Effective Porosity

During incorporation, the filaments are enclosed by an internal and external granuloma. When filament distance is too small, there is a risk that the whole intervening space will be filled with scar tissue (closed pores). Sufficiently large pores can prevent this [8C].

**How is this prevented?** PP implants must have a **pore diameter of at least 1 mm** in all directions, even under load! In the case of **PVDF** implants, a diameter of **0.6 mm** is already sufficient to keep the pores open due to the lower granuloma thickness. Only in this way can local autochthonous tissue form through a pore [6,68<sup>A</sup>,105<sup>A</sup>].



[#] Reference "#" (see "References")

[#A] Reference "#" (see "References"), "A": limitation "animal trial"

[#C] Reference "#" (see "References"), "C": limitation "results based on the analysis of explants"

**Textile porosity** refers to the permeable component of a mesh implant **before** the body has reacted to it.

**Effective porosity** refers to the permeable component of a mesh implant **after** the body has reacted to it.

**Rule of thumb:**

A 'pore' less than 1 mm in diameter is closed by the body with scar tissue = 0% effective porosity

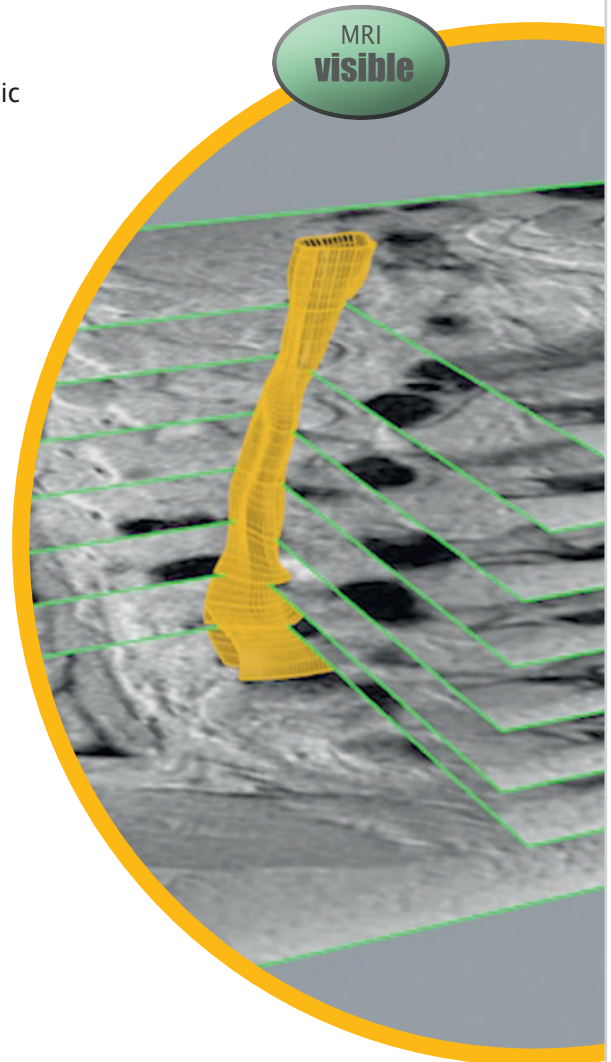


## DynaMesh® visible

Conventional mesh implants are mostly undetectable in diagnostic radiology.

DynaMesh® visible implants can be detected using magnetic resonance imaging (MRI) [7,29<sup>A</sup>,51,54,56,62,69-71,76,90] - both in standard sequences and in high-resolution, three-dimensional images and even films. As such, position and condition of the implant can be determined reliably and accurately.

DynaMesh® visible is the world's first technology to visualise textile implants. The PVDF filament is mixed with ferromagnetic micro-pigments according to a proprietary process that ensures optimum pigment incorporation. This innovation has won an award from the German Federal Ministry of Education and Research (BMBF 01EZ 0849).



Award-winner in the innovation competition hosted by the

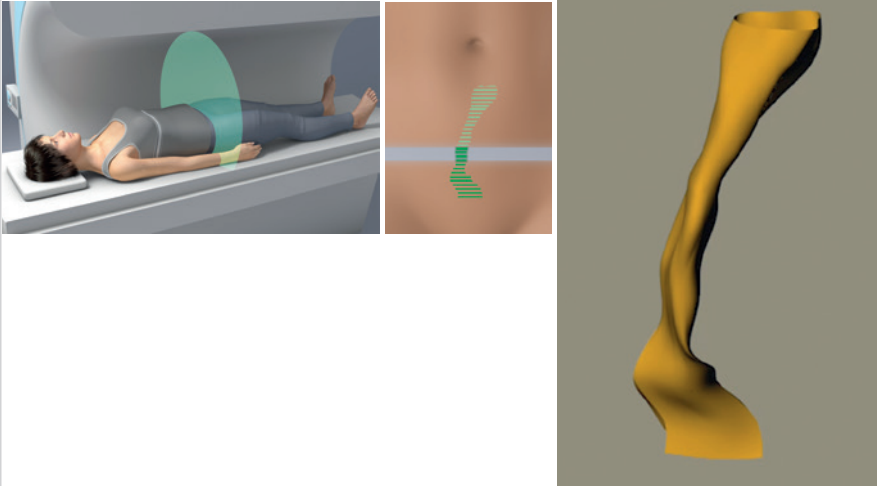


The development was sponsored by the German Federal Ministry of Education and Research (BMBF 01EZ 0849)

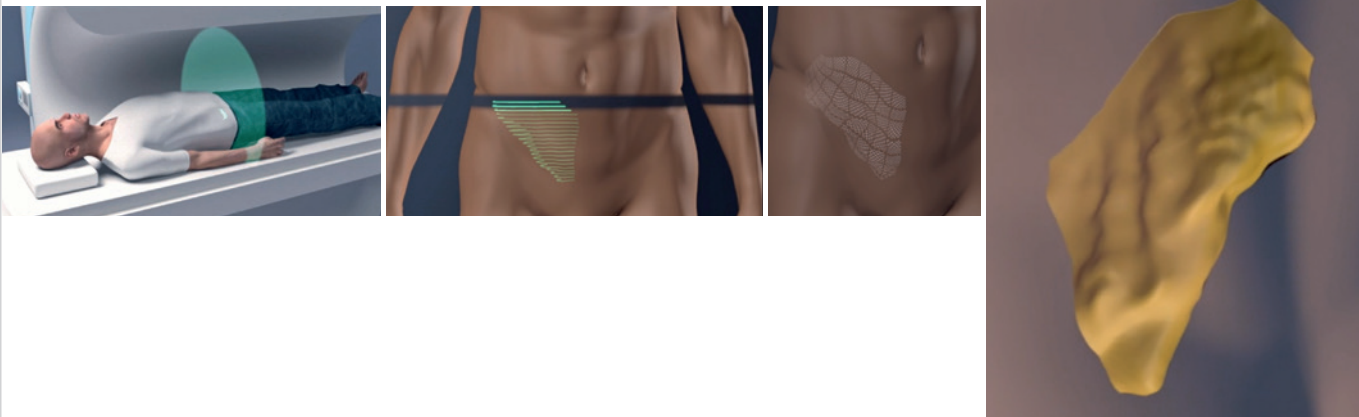
[#] Reference "#" (see "References")  
[#<sup>A</sup>] Reference "#" (see "References"), "A": limitation "animal trial"

# DynaMesh® visible




## DynaMesh®-PRS visible 3-dimensional remodelling



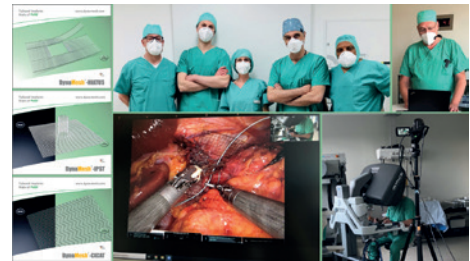
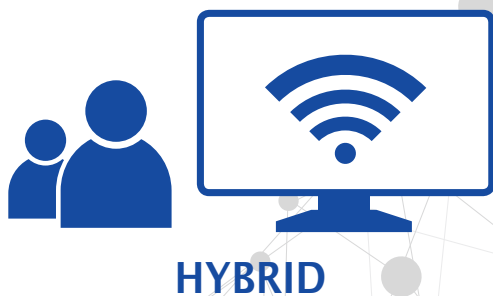
## DynaMesh®-ENDOLAP visible 3-dimensional remodelling



During MRI scans, the part of the body being analysed is scanned step-by-step and deconstructed into many 'wafer-thin optical slices'. At the end, these 'slices' are reconstructed to form 3-dimensional images or motion sequences (remodelling).

Vi069XX	DynaMesh® MRI - Animation: MRI Reconstruction with DynaMesh®-PRP visible <a href="https://de.dyna-mesh.com/Vi069xx">https://de.dyna-mesh.com/Vi069xx</a>	
Vi067XX	DynaMesh® MRI - Animation: MRI Reconstruction with DynaMesh®-PRS visible <a href="https://de.dyna-mesh.com/Vi067xx">https://de.dyna-mesh.com/Vi067xx</a>	
Vi032XX	DynaMesh®-ENDOLAP visible - Animation: MRI visible - 3D Implant Remodelling <a href="https://de.dyna-mesh.com/Vi032xx">https://de.dyna-mesh.com/Vi032xx</a>	

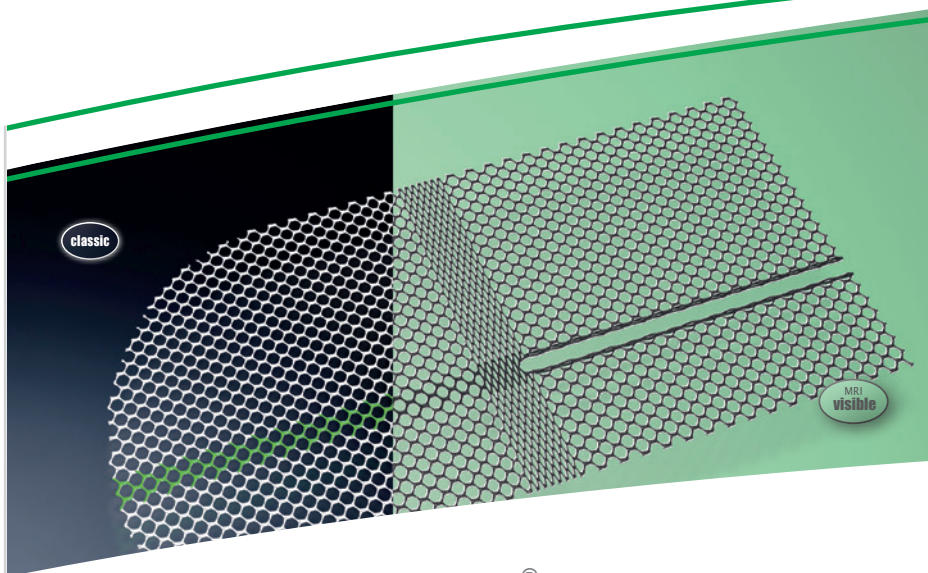
**LiSTO.academy** is a comprehensive platform providing excellent customised surgical education and trainings. Through cooperations with experienced surgeons and renowned experts from around the world, **LiSTO.academy** enables physicians to achieve best patient outcomes using DynaMesh® implants.



Visit us online:  
[www.listo.academy](http://www.listo.academy)







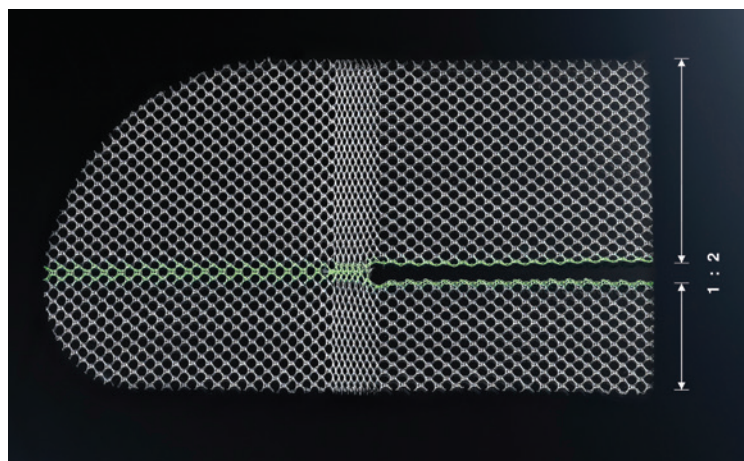
**DynaMesh®-LICHTENSTEIN** implants serve to support the tissue and stabilise the fascial structures of the inguinal region. They were specially developed for the conventional repair of inguinal hernias according to Lichtenstein and come in a size which fits the majority of patients and can therefore be used immediately without needing to be cut to size.

## DynaMesh®-LICHTENSTEIN

When selecting the mesh size, ensure sufficient overlap!

<b>DynaMesh®-LICHTENSTEIN</b>	06 cm x 11 cm	REF 2613110611	BX = 3 pieces
		REF 2610110611	BX = 10 pieces
	7.5 cm x 15 cm	REF 2611110715	BX = 1 piece
		REF 2613110715	BX = 3 pieces
<b>DynaMesh®-LICHTENSTEIN visible</b>	7.5 cm x 15 cm	REF 2610110715	BX = 10 pieces
		REF 2611170715	BX = 1 piece

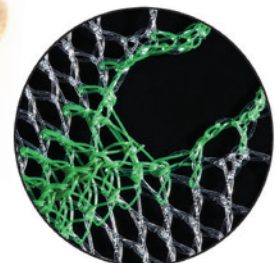
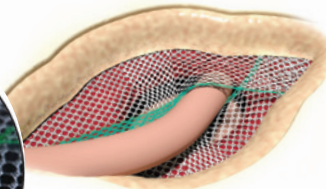
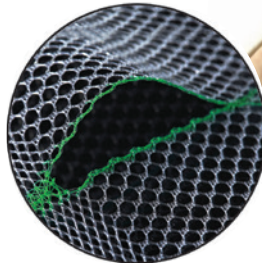
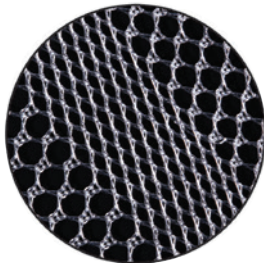
can be used both  
for the right and  
the left side



## Use and Properties

Product	DynaMesh®-LICHTENSTEIN	DynaMesh®-LICHTENSTEIN visible
Field of application	inguinal hernia	
Surgical access	open	
Surgical technique	Lichtenstein	
Mesh position	anterior	
Fixation	sutures / adhesives	
Green/black line marker		●
Specially Warp-knitted Selvedges		●
Visible technology	●	●
Polymer (monofilament)	PVDF	
Biocompatibility	●	
Ageing resistance	●	
Dynamometry	●	
Tear propagation resistance	●	
No scar plate formation	●	
Classification (Klinge's classification [8])	1 a	

For example: inguinal hernia, left side



### Less Effort

The elastic zone in the mesh, incorporated by using a special warp-knitting technique, makes it easier for the surgeon to achieve **fold-free** positioning of the implant.

### Less Risk

The special slit design enables tunnel modulation with **pressure distribution**.

### High Tear Propagation Resistance

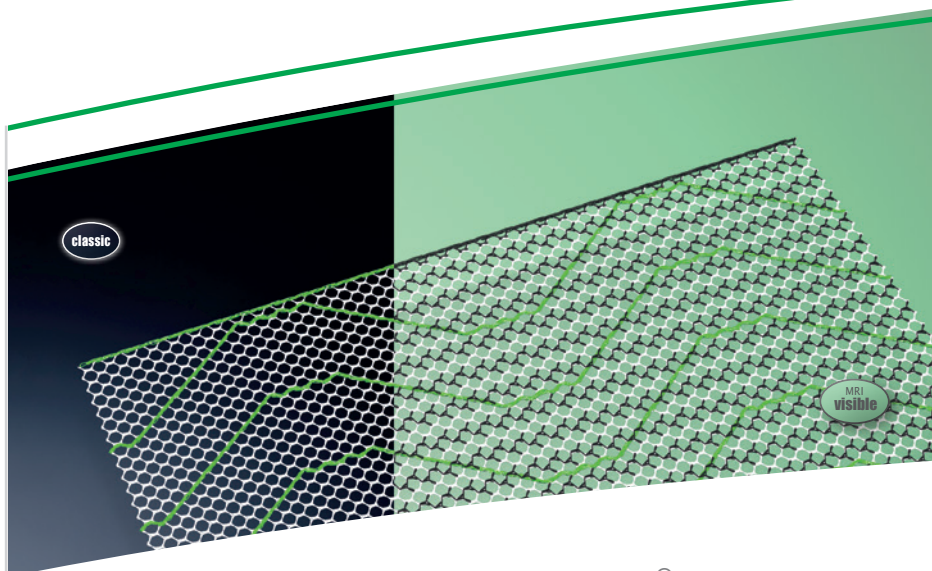
The high tear propagation resistance at the end point of the slit **minimises** the risk of **mesh rupture**.

- Applies to all product sizes
- Does not apply

Distributed by:

**DAHLHAUSEN®** Italy

Via Amerigo Vespucci 33, 84098 Pontecagnano Faiano (SA)  
 Tel: +39 089 759403 Fax: +39 089 2872995  
 eMail: italy@dahlhausen.de  
 website: www.dahlhausen.de



DynaMesh®-ENDOLAP implants serve to support the tissue and stabilise the fascial structures of the groin. They were specially developed for the endoscopic (laparoscopic) repair of inguinal hernias using common minimally invasive surgical techniques (TEP and TAPP).

## DynaMesh®-ENDOLAP

When selecting the mesh size, ensure sufficient overlap!

DynaMesh®-ENDOLAP	10 cm x 15 cm	REF 2611101015	BX = 1 piece
		REF 2613101015	BX = 3 pieces
	12 cm x 15 cm	REF 2610101015	BX = 10 pieces
		REF 2613101215	BX = 3 pieces
	13 cm x 15 cm	REF 2610101215	BX = 10 pieces
		REF 2613101315	BX = 3 pieces
	13 cm x 17 cm	REF 2613101317	BX = 3 pieces
		REF 2610101317	BX = 10 pieces
	15 cm x 15 cm	REF 2613101515	BX = 3 pieces
		REF 2610101515	BX = 10 pieces
DynaMesh®-ENDOLAP visible	10 cm x 15 cm	REF 2611141015	BX = 1 piece
		REF 2610101016	BX = 10 pieces

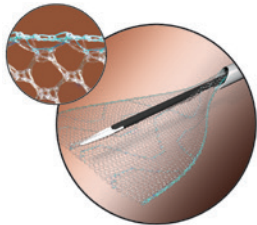
VI032xx

DynaMesh®-ENDOLAP visible - Animation:  
MRI visible - 3D Implant Remodelling  
<https://de.dyna-mesh.com/Vi032xx>



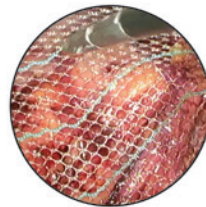
## Use and Properties

Product	DynaMesh®-ENDOLAP	DynaMesh®-ENDOLAP visible
Field of application	inguinal hernia	
Surgical access	endoscopic / laparoscopic	
Surgical technique	TEP / TAPP	
Mesh position	preperitoneal (posterior)	
Fixation	none / sutures / adhesives / tacks	
Green line marker		●
Specially Warp-knitted Selvedges		●
Visible technology	●	●
Polymer (monofilament)		PVDF
Biocompatibility		●
Ageing resistance		●
Dynamometry		●
Tear propagation resistance		●
No scar plate formation		●
Classification (Klinge's classification [8])		1a



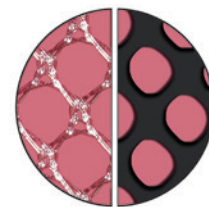
### Intraoperative Unfolding

The special textile construction makes it easy to insert the mesh via the trocar and to unfold it intraoperatively. The **antislip** surface and special selvedges ensure fold-free positioning. The green marker lines perform a dual function. They are used for rapid orientation and visual monitoring of whether the mesh is positioned tension-free.



### Choice of Method

**DynaMesh®-ENDOLAP** was developed specifically for **endoscopic (TEP)<sup>1)</sup>** and **laparoscopic (TAPP)** techniques. Should the surgeon consider fixation of the implant to be necessary, all fixation methods may be used.



### Pore Size

The special warp-knitted structure results in a high textile porosity. It is the basis for the **effective porosity** after the formation of the foreign body granuloma, which minimises the risk of scar plate formation.

<sup>1)</sup> Image of surgery courtesy of Dr. A. Kuthe, DRK-Krankenhaus Clementinenhaus, Hanover, Germany

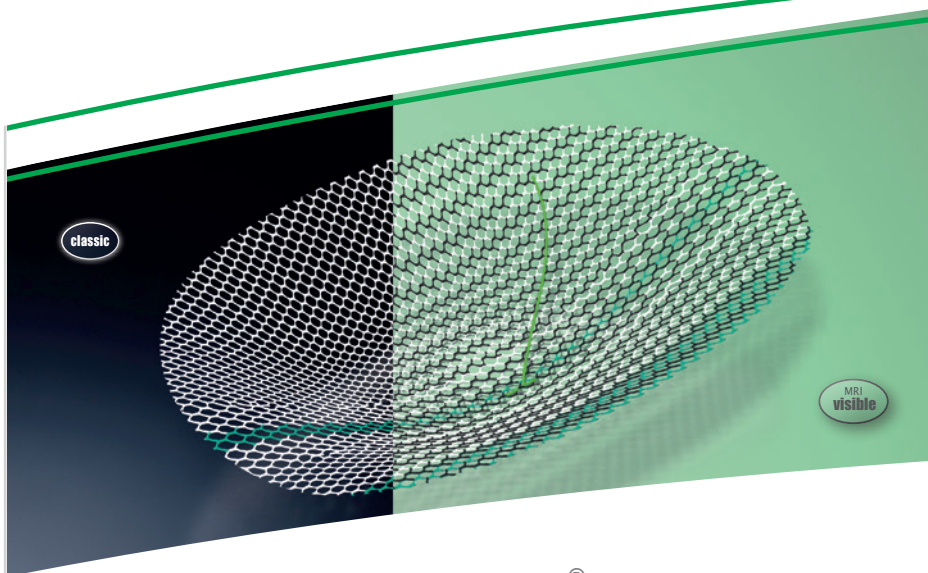
- Applies to all product sizes
- Does not apply

Distributed by:

**DAHLHAUSEN®** Italy

Via Amerigo Vespucci 33, 84098 Pontecagnano Faiano (SA)  
 Tel: +39 089 759403 Fax: +39 089 2872995  
 eMail: italy@dahlhausen.de  
 website: www.dahlhausen.de







DynaMesh®-ENDOLAP 3D implants are used to reinforce connective tissue structures in the groin region. They were specially developed for the endoscopic (laparoscopic) repair of inguinal hernias using current minimally invasive surgical techniques (TEP and TAPP).

## DynaMesh®-ENDOLAP 3D

When selecting the mesh size, ensure sufficient overlap!

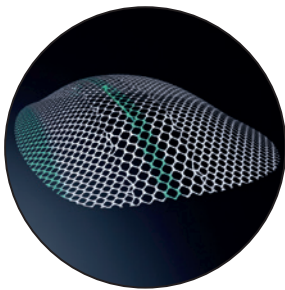
<b>DynaMesh®-ENDOLAP 3D</b>	09 cm x 14 cm	REF 2611130914	BX = 1 piece
		REF 2611130913	BX = 3 pieces
	10 cm x 15 cm regular	REF 2611131015	BX = 1 piece
		REF 2611131016	BX = 3 pieces
	12 cm x 17 cm	REF 2611131217	BX = 1 piece
		REF 2611131218	BX = 5 pieces
<b>DynaMesh®-ENDOLAP 3D visible</b>	10 cm x 15 cm	REF 2611121015	BX = 1 piece
		REF 2611131014	BX = 3 pieces
	12 cm x 17 cm	REF 2611121217	BX = 1 piece

can be used both for the right and the left side

VI012xx	DynaMesh®-ENDOLAP 3D - Animation: Total Extraperitoneal Endoscopic Hernioplasty (TEP) <a href="https://de.dyna-mesh.com/Vi012xx">https://de.dyna-mesh.com/Vi012xx</a>	
VI013xx	DynaMesh®-ENDOLAP 3D - Animation: TAPP Technique for Treatment of Inguinal Hernia <a href="https://de.dyna-mesh.com/Vi013xx">https://de.dyna-mesh.com/Vi013xx</a>	

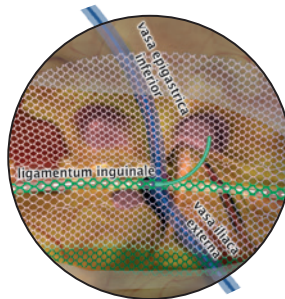
## Use and Properties

Product	DynaMesh®- ENDOLAP 3D	DynaMesh®- ENDOLAP 3D visible
Field of application	inguinal hernia	
Surgical access	endoscopic / laparoscopic	
Surgical technique	TEP / TAPP	
Mesh position	preperitoneal (posterior)	
Fixation	none / sutures / adhesives / tacks	
Green thread and line marker		●
CURVATOR®		●
Visible technology	●	●
Polymer (monofilament)	PVDF	
Biocompatibility	●	
Ageing resistance	●	
Dynamometry	●	
Tear propagation resistance	●	
No scar plate formation	●	
Classification (Klinge's classification [8])	1 a	



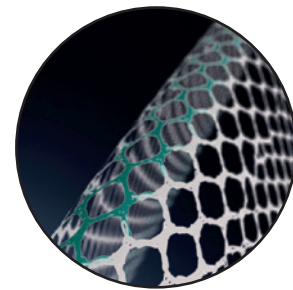
### Optimised Shape

The **three-dimensional** form of the mesh enables the adaptation to the anatomy of the groin region.



### Standardised Positioning

The implants have a central marking and a longitudinal marking for **alignment** with the inguinal ligament.



### CURVATOR®

The pore size of the mesh varies laterally to the longitudinal marking in order to **reduce postoperative creasing** along the length of the inguinal ligament and to ensure high effective porosity.

Distributed by:

**DAHLHAUSEN®** Italy

Via Amerigo Vespucci 33, 84098 Pontecagnano Faiano (SA)

Tel: +39 089 759403 Fax: +39 089 2872995

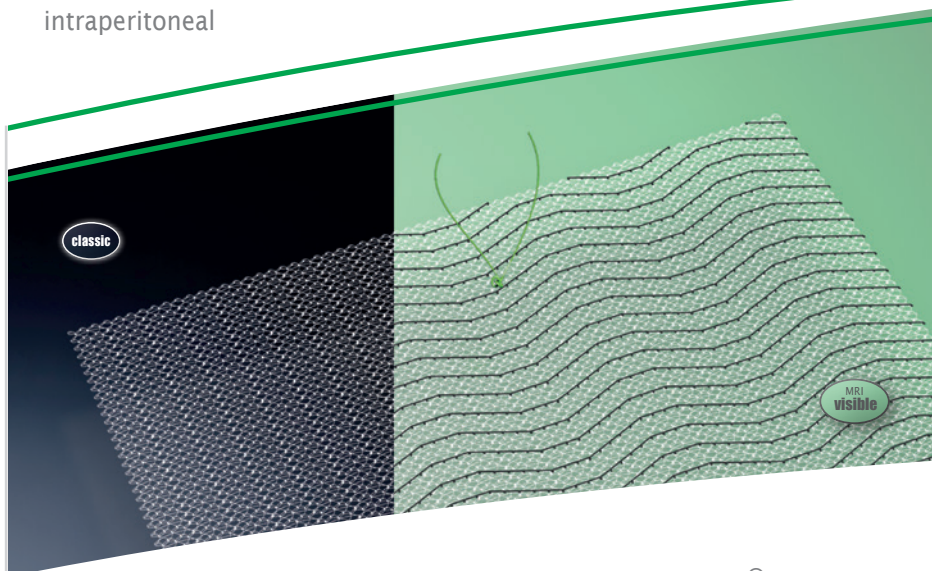
eMail: italy@dahlhausen.de

website: www.dahlhausen.de

● Applies to all product sizes  
● Does not apply

**Hernias**

Abdominal Wall Hernia / Umbilical Hernia  
intraperitoneal



**DynaMesh®-IPOM** implants are designed for soft tissue reinforcement and soft tissue bridging of the fascial and connective tissue structures of the abdominal wall as part of surgical treatment for epigastric hernias, umbilical or incisional hernias, and parastomal hernias following ostomy surgery.

## DynaMesh®-IPOM

### Abdominal Wall Hernia

Recommended sizes for the surgical treatment of abdominal wall hernias.  
When selecting the mesh size, ensure sufficient overlap!

<b>DynaMesh®-IPOM</b>	☉	d 12 cm round	REF 2610070012	BX = 1 piece
			REF 2613070012	BX = 3 pieces
	☐	10 cm x 15 cm	REF 2610071015	BX = 1 piece
			REF 2610071016	BX = 3 pieces
		15 cm x 15 cm	REF 2610071515	BX = 1 piece
			REF 2613071515	BX = 3 pieces
		15 cm x 20 cm	REF 2610071520	BX = 1 piece
			REF 2613071520	BX = 3 pieces
		20 cm x 20 cm	REF 2610072020	BX = 1 piece
		20 cm x 25 cm	REF 2611072025	BX = 1 piece
		20 cm x 30 cm	REF 2610072030	BX = 1 piece
			REF 2613072030	BX = 3 pieces
		28 cm x 37 cm	REF 2610072837	BX = 1 piece
		30 cm x 30 cm	REF 2610073030	BX = 1 piece
30 cm x 45 cm	REF 2610073045	BX = 1 piece		

<b>DynaMesh®-IPOM visible</b>	30 cm x 30 cm	REF 2611083030	BX = 1 piece
-------------------------------	---------------	----------------	--------------

### Umbilical Hernia

Recommended sizes for the surgical treatment of umbilical hernias.  
When selecting the mesh size, ensure sufficient overlap!




<b>DynaMesh®-IPOM</b>	☐	07 cm x 06 cm	REF 2610070706	BX = 5 pieces
	☉	d 12 cm round	REF 2610070012	BX = 1 piece
			REF 2613070012	BX = 3 pieces
	☐	10 cm x 15 cm	REF 2610071015	BX = 1 piece
			REF 2610071016	BX = 3 pieces
		15 cm x 15 cm	REF 2610071515	BX = 1 piece
			REF 2613071515	BX = 3 pieces

## Use and Properties

Product	DynaMesh®-IPOM	DynaMesh®-IPOM visible
Field of application	abdominal wall hernia / umbilical hernia	
Surgical access	laparoscopic / open	
Surgical technique	IPOM	
Mesh position	intraperitoneal	
Fixation	sutures / tacks	
Green marker thread		●
PVDF barrier		●
Visible technology	●	●
Dual-component structure	PVDF monofilament > 85 % PP monofilament	
Biocompatibility		●
Ageing resistance		●
Dynamometry		●
Tear propagation resistance		●
No scar plate formation		●
Classification (Klinge's classification [8])		1 a

**DynaMesh®-IPOM** implants have a parietal side and a visceral side.

The parietal side is identified by green-marked filament ends and consists of PVDF on the surface and a small proportion of PP, whereas the visceral side consists of PVDF on the surface.

VI003xx	DynaMesh®-IPOM - Animation: Laparoscopic Repair of Incisional Hernia <a href="https://de.dyna-mesh.com/Vi003xx">https://de.dyna-mesh.com/Vi003xx</a>	
VI108en	DynaMesh®-IPOM - Animation: The 3 Key Aspects for DynaMesh®-IPOM (best practice example) <a href="https://de.dyna-mesh.com/Vi108en">https://de.dyna-mesh.com/Vi108en</a>	
VI051xx	DynaMesh®-IPOM visible - Animation: 3D Implant Remodelling <a href="https://de.dyna-mesh.com/Vi051xx">https://de.dyna-mesh.com/Vi051xx</a>	

Distributed by:

**DAHLHAUSEN®** Italy

Via Amerigo Vespucci 33, 84098 Pontecagnano Faiano (SA)

Tel: +39 089 759403 Fax: +39 089 2872995

eMail: italy@dahlhausen.de

website: www.dahlhausen.de

- Applies to all product sizes
- Does not apply

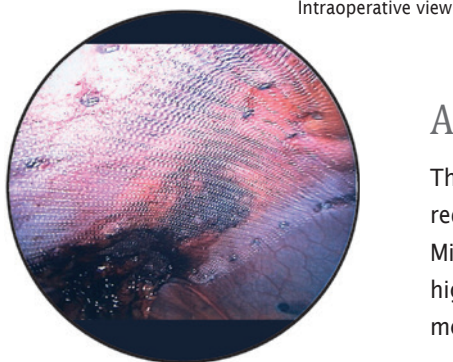
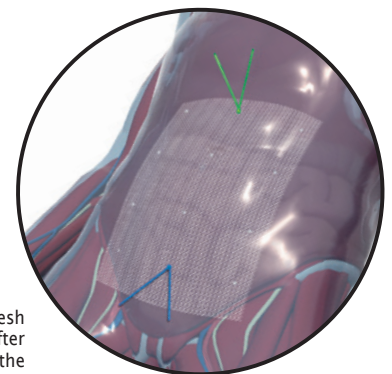
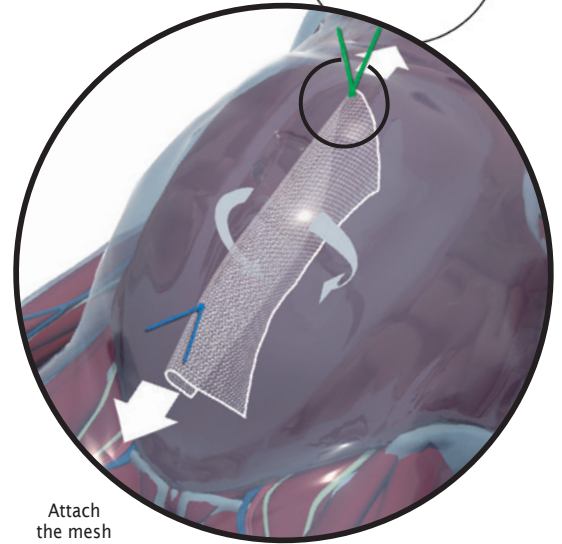
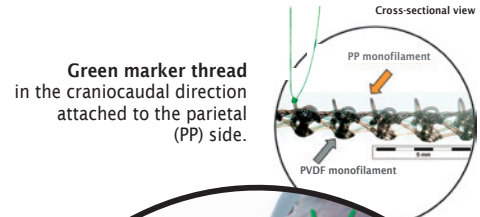


## Dual-Layer Composite Mesh

**DynaMesh®-IPOM** is a dual-component structure specifically developed for the IPOM technique and consists mainly of high-purity PVDF and a small proportion of polypropylene (PP). The parietal side (PP) promotes rapid and safe ingrowth into the abdominal wall. The PVDF layer on the visceral side forms a barrier to the intestines. PVDF demonstrably decreases the risks of adhesions compared with polypropylene [11] and thus reduces the risk of intestinal erosions. If implantation of several meshes is required (for example, the sandwich technique [9]), the open-pore structure means that implants can easily be overlapped.

## Correct Orientation

The parietal side (PP component) has a green marker thread and must face the abdominal wall. The marker thread is located on the front surface and simultaneously shows the correct direction of the elasticity in the craniocaudal direction.



## Advantages for the Patients

The open-pore mesh construction facilitates the break-down of seroma and reduces scar plate formation.

Minimal mesh shrinkage is achieved and long-term surgical success with high patient comfort is ensured [9-14] through the open-pore and elastic mesh construction made from PVDF, which offers long-term stability.

Distributed by:

**DAHLHAUSEN®** Italy

Via Amerigo Vespucci 33, 84098 Pontecagnano Faiano (SA)

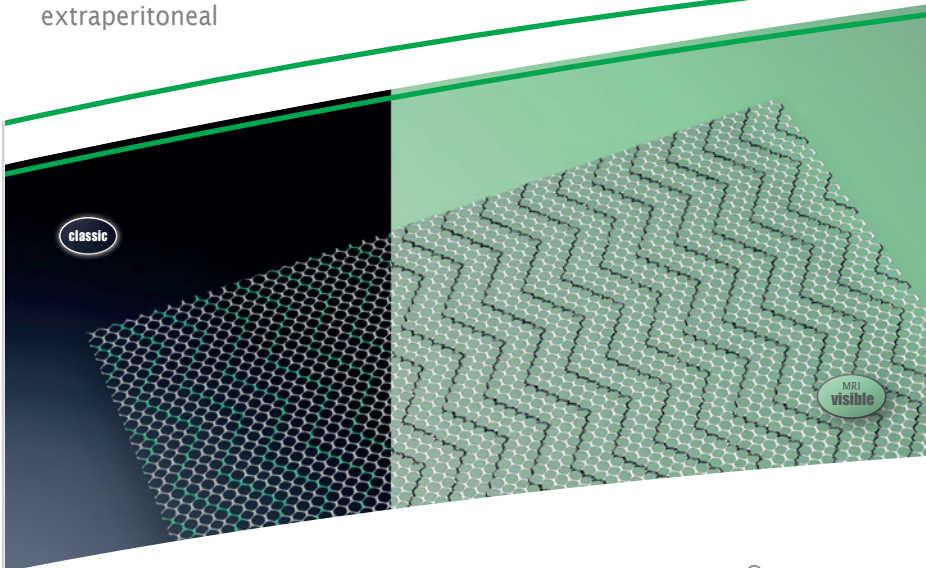
Tel: +39 089 759403 Fax: +39 089 2872995

eMail: italy@dahlhausen.de

website: www.dahlhausen.de










Hernias

Abdominal Wall Hernia / Umbilical Hernia  
extraperitoneal



DynaMesh®-CICAT implants are designed for soft tissue reinforcement and soft tissue bridging of the fascial and connective tissue structures of the abdominal wall as part of surgical treatment for epigastric hernias, umbilical or incisional hernias, and also as part of incisional hernia prevention.

# DynaMesh®-CICAT

Abdominal Wall Hernia		Recommended sizes for the surgical treatment of abdominal wall hernias. When selecting the mesh size, ensure sufficient overlap! <sup>(P)</sup> Prophylaxis		
DynaMesh®-CICAT		d 10 cm round	REF 2610090010	BX = 3 pieces
		10 cm x 10 cm	REF 2610091010	BX = 3 pieces
		15 cm x 15 cm	REF 2613091515	BX = 3 pieces
DynaMesh®-CICAT		<b>longitudinal</b>		
		10 cm x 35 cm <sup>(P)</sup>	REF 2610091035	BX = 2 pieces
		15 cm x 25 cm	REF 2610091525	BX = 2 pieces
			REF 2615091525	BX = 5 pieces
		15 cm x 30 cm	REF 2610091530	BX = 2 pieces
			REF 2615091530	BX = 5 pieces
		18 cm x 40 cm	REF 2610091840	BX = 2 pieces
		20 cm x 30 cm	REF 2610092030	BX = 2 pieces
			REF 2615092030	BX = 5 pieces
		30 cm x 45 cm	REF 2610093045	BX = 1 piece
	REF 2613093045	BX = 3 pieces		
45 cm x 60 cm	REF 2611094560	BX = 1 piece		
DynaMesh®-CICAT		<b>transversal</b>		
		40 cm x 20 cm	REF 2610094020	BX = 1 piece
DynaMesh®-CICAT visible		20 cm x 30 cm	REF 2611162030	BX = 1 piece
		45 cm x 60 cm	REF 2611164560	BX = 1 piece
Umbilical Hernia		Recommended sizes for the surgical treatment of umbilical hernias. When selecting the mesh size, ensure sufficient overlap!		
DynaMesh®-CICAT		05 cm x 06 cm	REF 2610090057	BX = 5 pieces
		d 10 cm round	REF 2610090010	BX = 3 pieces
		10 cm x 10 cm	REF 2610091010	BX = 3 pieces
		15 cm x 15 cm	REF 2613091515	BX = 3 pieces
DynaMesh®-CICAT visible		05 cm x 06 cm	REF 2610090059	BX = 5 pieces

**Hernias**





Abdominal Wall Hernia / Umbilical Hernia  
extraperitoneal

**DynaMesh®-CICAT**

**Use and Properties**

Product	DynaMesh®-CICAT	DynaMesh®-CICAT visible
Field of application	abdominal wall hernia / umbilical hernia	
Surgical access	open / mini-open / endoscopic / laparoscopic	
Surgical technique	all current extraperitoneal surgical techniques	
Mesh position	extraperitoneal (onlay, sublay and/or preperitoneal)	
Fixation	none / sutures / adhesives	
Green/black marking strips		●
Visible technology	●	●
Polymer (monofilament)		PVDF
Biocompatibility		●
Ageing resistance		●
Dynamometry		●
Tear propagation resistance		●
No scar plate formation		●
Classification (Klinge's classification [8])		1a

DynaMesh®-CICAT implants should be placed extraperitoneally in onlay, sublay and/or preperitoneal mesh position.

VI008xx	DynaMesh®-CICAT - Animation: Retromuscular Alloplasty - Incisional Hernia Repair <a href="https://de.dyna-mesh.com/Vi008xx">https://de.dyna-mesh.com/Vi008xx</a>	
VI002en	DynaMesh®-CICAT - Animation: Umbilical Hernia Repair in PUMP Technique <a href="https://de.dyna-mesh.com/Vi002en">https://de.dyna-mesh.com/Vi002en</a>	
VI002de	DynaMesh®-CICAT - Animation: Reparation der Nabelhernie in der PUMP Technik <a href="https://de.dyna-mesh.com/Vi002de">https://de.dyna-mesh.com/Vi002de</a>	
VI009xx	DynaMesh®-CICAT - Animation: MILOS Technique <a href="https://de.dyna-mesh.com/Vi009xx">https://de.dyna-mesh.com/Vi009xx</a>	

- Applies to all product sizes
- Does not apply

Distributed by:

**DAHLHAUSEN®** *Italy*

Via Amerigo Vespucci 33, 84098 Pontecagnano Faiano (SA)  
Tel: +39 089 759403 Fax: +39 089 2872995  
eMail: italy@dahlhausen.de  
website: www.dahlhausen.de

Hernias

Abdominal Wall Hernia / Umbilical Hernia  
extraperitoneal

Clear-Cut Use

	Abdominal Wall Hernia			Umbilical Hernia	
	longitudinal	transversal		sublay	subfascial
Repair					
Prophylaxis (P)			—	—	—

Safe Positioning

A requirement for lasting surgical success is that the implant must be correctly positioned.

For this purpose, the implants are incorporated with **green orientation strips**. They must always run in the **craniocaudal** direction.

Safe Placement

The **antislip surface** ensures stable positioning of the mesh. It also facilitates handling and fixation.

The high effective porosity allows direct contact of the tissue layers through the mesh and promotes rapid incorporation.

**Please note:** DynaMesh®-CICAT must not be placed intraperitoneally.

Distributed by:



Via Amerigo Vespucci 33, 84098 Pontecagnano Faiano (SA)

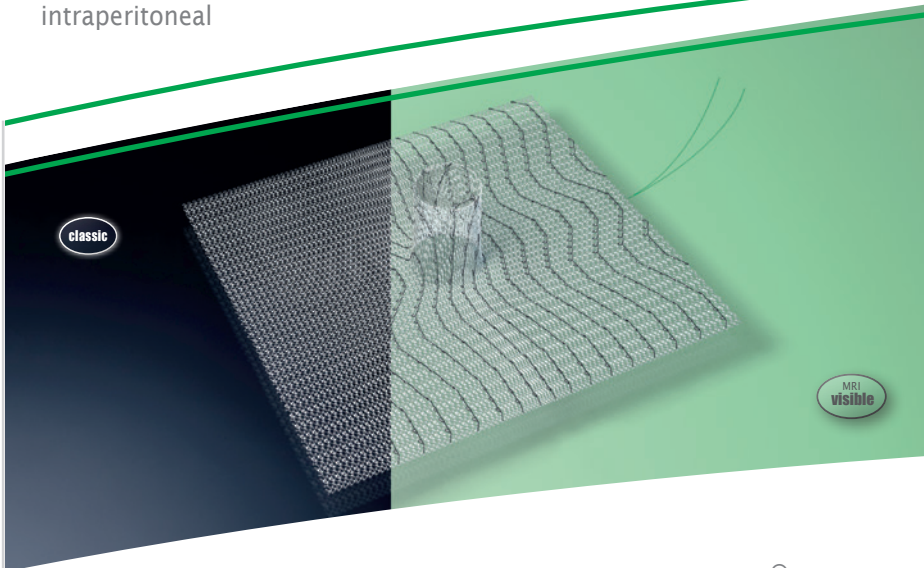
Tel: +39 089 759403 Fax: +39 089 2872995

eMail: italy@dahlhausen.de

website: www.dahlhausen.de



Hernias  
Parastomal Hernia  
intraperitoneal



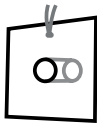
DynaMesh®-IPST implants are used in the prophylaxis and therapy of hernias and fascial defects in the abdominal wall after ostomy as well as to reinforce connective tissue structures and prevent prolapse of the diverted portion of the intestines.

## DynaMesh®-IPST

### Repair and Prevention of Parastomal Hernia

When selecting the mesh size, ensure sufficient overlap!

#### DynaMesh®-IPST



#### Funnel height: 4.0 cm

ø 02 cm x 15 cm x 15 cm (L4) REF 2610740215 BX = 1 piece

#### Funnel height: 2.5 cm

ø 02 cm x 15 cm x 15 cm REF 2610771515 BX = 1 piece

ø 02 cm x 25 cm x 25 cm REF 2610772525 BX = 1 piece

ø 03 cm x 16 cm x 16 cm REF 2610770316 BX = 1 piece

ø 04 cm x 17 cm x 17 cm REF 2610770417 BX = 1 piece

#### DynaMesh®-IPST visible

#### Funnel height: 4.0 cm

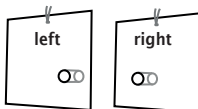
ø 02 cm x 15 cm x 15 cm (L4) REF 2610771504 BX = 1 piece

#### Funnel height: 2.5 cm

ø 02 cm x 15 cm x 15 cm REF 2610771514 BX = 1 piece

ø 03 cm x 16 cm x 16 cm REF 2610770315 BX = 1 piece

#### DynaMesh®-IPST-D visible



#### Funnel height: 4.0 cm

ø 02 cm x 30 cm x 30 cm (L4) left REF 2610773004 BX = 1 piece

ø 02 cm x 30 cm x 30 cm (L4) right REF 2610773005 BX = 1 piece

Important: Side specificity (left-sided/right-sided stoma)

### Repair of Parastomal Hernia

When selecting the mesh size, ensure sufficient overlap!

#### DynaMesh®-IPST-R



#### Funnel height: 3.5 cm

ø 03 cm x 16 cm x 16 cm (L3.5) REF 2610780316 BX = 1 piece

#### DynaMesh®-IPST-R visible

#### Funnel height: 3.5 cm

ø 03 cm x 16 cm x 16 cm (L3.5) REF 2610780315 BX = 1 piece

## Use and Properties


Product	DynaMesh®- IPST (1) / -IPST visible (2)	DynaMesh®- IPST-D visible (3)	DynaMesh®- IPST-R (4) / -IPST-R visible (5)
Field of application	parastomal hernia (repair / prevention)		parastomal hernia (repair)
Surgical access	laparoscopic / open		
Surgical technique	IPOM		
Mesh position	intraperitoneal		
Fixation	sutures / tacks		
Green marker thread	●		
PVDF barrier	●		
Visible technology	● (1) / ● (2)	● (3)	● (4) / ● (5)
Dual-component structure	PVDF monofilament > 85 % PP monofilament		
Biocompatibility	●		
Ageing resistance	●		
Dynamometry	●		
Tear propagation resistance	●		
No scar plate formation	●		
Classification (Klinge's classification [8])	1 a		

All DynaMesh®-IPST implants are used both in laparoscopy and in open surgery. Common applications follow the intraperitoneal onlay mesh technique since the mesh is composed of different materials, which allows intraperitoneal application.

All DynaMesh®-IPST implants have a parietal and a visceral side. The parietal side is marked with green thread ends and consists of PVDF and a small portion of PP on the surface, while the visceral side consists of PVDF on the surface.

DynaMesh®-IPST-D visible implants are used for the repair as well as the prevention of parastomal hernia with particularly large overlap in cranial and medial direction with intraperitoneal mesh position (side specificity: left-sided / right-sided stoma).

DynaMesh®-IPST-R implants are used to repair the parastomal hernia without detachment of the stoma from the abdominal wall with intraperitoneal mesh position. The prefabricated slit facilitates placement of the mesh implant around the terminal segment of the bowel.

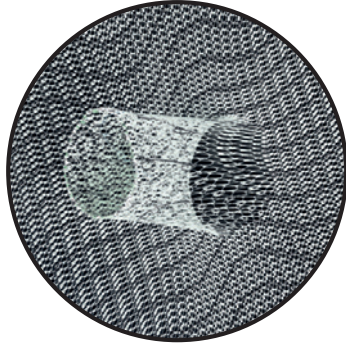
VI087xx	DynaMesh®-IPST - Animation: Parastomal Hernia <a href="https://de.dyna-mesh.com/Vi087xx">https://de.dyna-mesh.com/Vi087xx</a>	
---------	---	---

Distributed by:

 **DAHLHAUSEN®** Italy

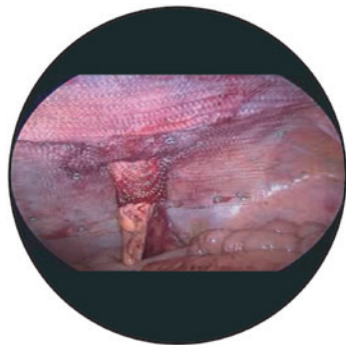
Via Amerigo Vespucci 33, 84098 Pontecagnano Faiano (SA)  
Tel: +39 089 759403 Fax: +39 089 2872995  
eMail: italy@dahlhausen.de  
website: www.dahlhausen.de

- Applies to all product sizes
- Does not apply



## Handling

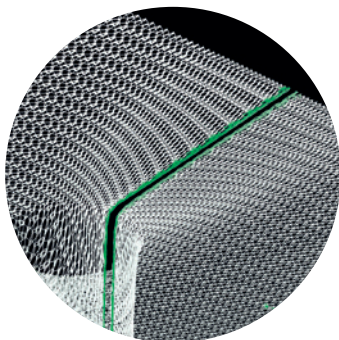
The implant is made from a single piece of mesh for a seamless junction with the elastic funnel. **DynaMesh®-IPST** is a **three-dimensional** preshaped implant providing excellent elasticity and flexibility - which facilitates stomaplasty preparation for the surgeon.



## Elastic Funnel

The dual-layer composite structure promotes ingrowth into the abdominal wall while at the same time reducing the risks of adhesions on the visceral side.

The **elastic funnel** with no sharp selvedges leads to secure integration of the terminal segment of bowel and reliably prevents parastomal hernia formation [15,61].



## Placement

**DynaMesh®-IPST-R** can be placed without detaching the stoma from the abdominal wall.

The prefabricated slit makes it easier to place the mesh implant around the terminal section of the bowel.

Distributed by:

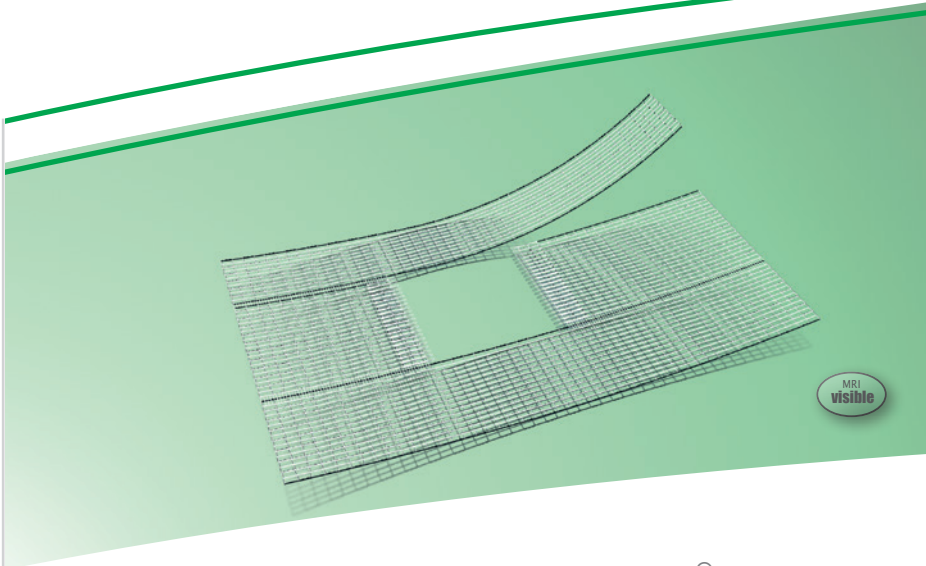
**DAHLHAUSEN®** Italy

Via Amerigo Vespucci 33, 84098 Pontecagnano Faiano (SA)

Tel: +39 089 759403 Fax: +39 089 2872995

eMail: [italy@dahlhausen.de](mailto:italy@dahlhausen.de)

website: [www.dahlhausen.de](http://www.dahlhausen.de)




DynaMesh®-HIATUS implants are specially developed for prosthetic hiatoplasty and serve to achieve the long-lasting support and stabilisation of the diaphragm in the region of the oesophageal hiatus.

## DynaMesh®-HIATUS

When selecting the mesh size, ensure sufficient overlap!

DynaMesh®-HIATUS	07 cm x 12 cm	REF 2611610712	BX = 1 piece
		REF 2611610713	BX = 3 pieces
	08 cm x 13 cm	REF 2611610813	BX = 1 piece
		REF 2611610814	BX = 3 pieces

VI014xx	DynaMesh®-HIATUS - Animation: Surgical Treatment of Hiatal Hernia in Laparoscopic Technique <a href="https://de.dyna-mesh.com/Vi014xx">https://de.dyna-mesh.com/Vi014xx</a>	
---------	--	---

### Use and Properties

Product	DynaMesh®-HIATUS
Field of application	hiatal hernia
Surgical access	laparoscopic
Surgical technique	hiatal hernia surgery with implant
Fixation	sutures / adhesives / tacks*
Shape stability	●
Specially Warp-knitted Selvedges	●
Visible technology	●
Polymer (monofilament)	PVDF
Biocompatibility	●
Ageing resistance	●
Dynamometry	●
Tear propagation resistance	●
No scar plate formation	●
Classification (Klinge's classification [8])	1a

\* Tacks may only be used if injury to the pericardium can be ruled out with certainty.

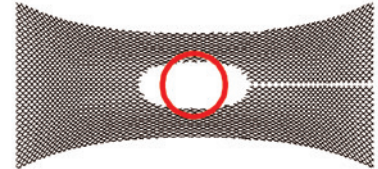
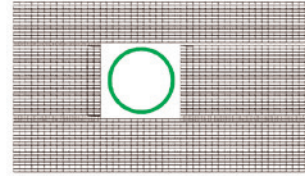
● Applies to all product sizes



## Shape Stability Under Load

Conventional mesh structures deform under load. Constriction of the mesh in the region of the hiatus may reduce the distance between mesh implant and oesophagus, eventually causing mesh erosion.

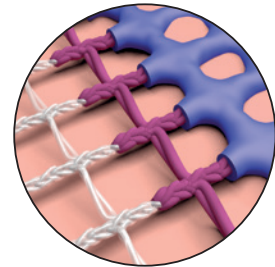
**DynaMesh®-HIATUS** is based on a sophisticated textile design with rectangular pores, which even under load retain a high degree of shape stability.



## High Effective Porosity

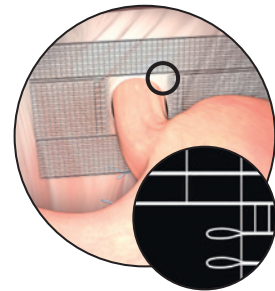
Mesh implants tend to shrink after incorporation in vivo.

**DynaMesh®-HIATUS** has a high effective porosity, which ensures that the mesh implant is thoroughly incorporated. During incorporation, the use of the proven and highly biocompatible PVDF polymer ensures that scarring is kept to a minimum. The good incorporation of the mesh implants combined with less scarring leads to minimisation of mesh shrinkage and permanently high flexibility of the incorporated implant.



## Smooth, Warp-Knitted Selvedges

If the mesh does come into contact with the oesophagus in spite of all measures to prevent it, **DynaMesh®-HIATUS** has smooth selvedges that can minimise the danger of mesh erosion.



Distributed by:

**DAHLHAUSEN®** Italy

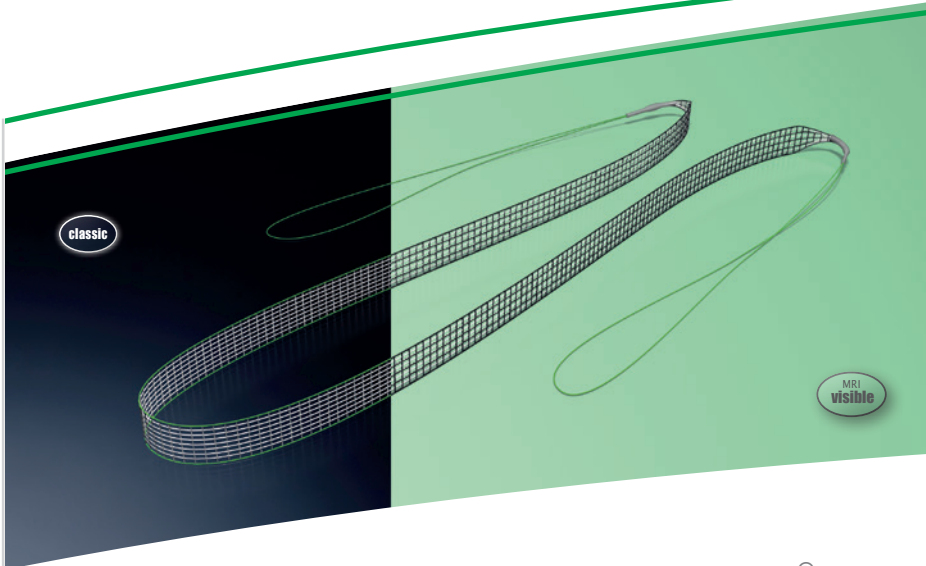
Via Amerigo Vespucci 33, 84098 Pontecagnano Faiano (SA)

Tel: +39 089 759403 Fax: +39 089 2872995

eMail: [italy@dahlhausen.de](mailto:italy@dahlhausen.de)

website: [www.dahlhausen.de](http://www.dahlhausen.de)

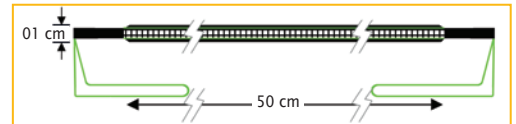
Female Urinary Incontinence  
Stress Urinary Incontinence



DynaMesh®-SIS implants are designed as a midurethral sling for soft tissue reinforcement of the pelvic floor as part of the surgical treatment of stress urinary incontinence caused by a hypermobile urethra and/or intrinsic sphincter deficiency.

## DynaMesh®-SIS

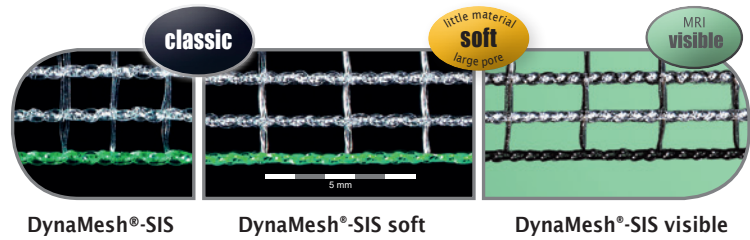
DynaMesh®-SIS	01 cm x 50 cm	REF 2621210156	BX = 1 piece
		REF 2623210156	BX = 3 pieces
DynaMesh®-SIS soft	01 cm x 50 cm	REF 2621410156	BX = 1 piece
		REF 2623410156	BX = 3 pieces
DynaMesh®-SIS visible	01 cm x 50 cm	REF 2621470156	BX = 1 piece
		REF 2623470156	BX = 3 pieces



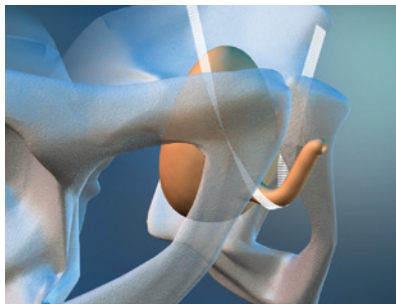
## Use and Properties

Product	DynaMesh®-SIS	DynaMesh®-SIS soft	DynaMesh®-SIS visible
Field of application	stress urinary incontinence (SUI)		
Surgical access	transvaginal		
Surgical technique	TVT - retropubic - inside-out / TOT - transobturator - inside-out - outside-in		
Fixation	none		
Specially Warp-knitted Selvedges		●	
Shape stability [TR1,TR12]		●	
Defined elasticity [TR10]		●	
Visible technology	●	●	●
Polymer (monofilament)		PVDF	
Biocompatibility [1 <sup>A</sup> ,2 <sup>A</sup> ,4 <sup>A</sup> ,68 <sup>A</sup> ,100 <sup>A</sup> ,TR1]		●	
Ageing resistance [101,2 <sup>A</sup> ,5 <sup>B</sup> ,52 <sup>B</sup> ,93 <sup>A</sup> ,27 <sup>A</sup> ]		●	
Classification (Klinge's classification [8]) [TR1 1]		1a	

● Applies to all product sizes  
● Does not apply  
[#] Reference "#" (see "References")  
[#<sup>A</sup>] Reference "#" (see "References"), "A": limitation "animal trial"  
[#<sup>B</sup>] Reference "#" (see "References"), "B": limitation "in-vitro trial"  
[TR#] Internal test-report (see "internal test-report references")



**Retropubic**  
(inside-out / bottom-up)



**Transobturator**  
(inside-out & outside-in)



DynaMesh®-SIS implants are positioned using the inside-out technique in case of a retropubic tape position, and using the outside-in or inside-out technique in case of a transobturator tape position.

DynaMesh®-SIS implants have a thread on both ends of the sling, which aids fixation to the surgical instrument.

Several reusable instruments are available separately to assist the positioning of DynaMesh®-SIS implants:



**DynaMesh®-ISR01:**

Instrument for retropubic positioning of DynaMesh®-SIS implants through transvaginal access using the inside-out technique.



Diameter: 5 - 7 cm

**DynaMesh®-IST01/-IST02/-IST03:**

Instrument set consisting of two instruments (right and left side) for transobturator positioning through transvaginal access using the inside-out or outside-in technique.



**DynaMesh®-IVT01:**

Instrument for transobturator positioning through transvaginal access using the outside-in technique.

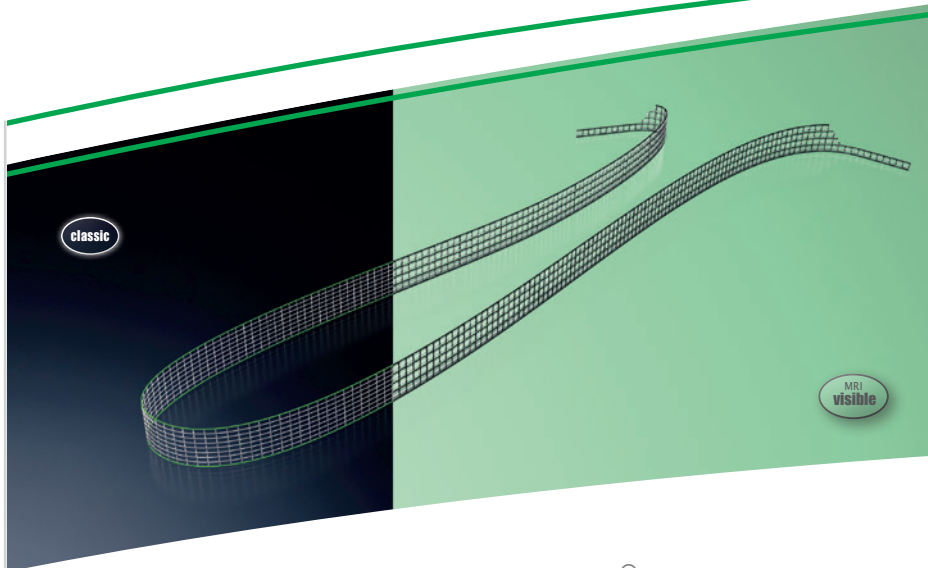
VI040xx	DynaMesh®-SIS - Animation: Surgical Treatment of Stress Urinary Incontinence - SUI - TVT 8/4 <a href="https://de.dyna-mesh.com/Vi040xx">https://de.dyna-mesh.com/Vi040xx</a>	
---------	---	--

Distributed by:

**DAHLHAUSEN®** *Italy*

Via Amerigo Vespucci 33, 84098 Pontecagnano Faiano (SA)  
Tel: +39 089 759403 Fax: +39 089 2872995  
eMail: italy@dahlhausen.de  
website: www.dahlhausen.de

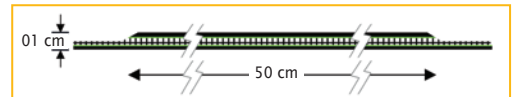
Female Urinary Incontinence  
Stress Urinary Incontinence



DynaMesh®-SIS direct implants are designed as a midurethral sling for soft tissue reinforcement of the pelvic floor as part of the surgical treatment of stress urinary incontinence caused by a hypermobile urethra and/or intrinsic sphincter deficiency.

## DynaMesh®-SIS direct

DynaMesh®-SIS direct	01 cm x 50 cm	REF 2621210150	BX = 1 piece
		REF 2623210150	BX = 3 pieces
DynaMesh®-SIS direct soft	01 cm x 50 cm	REF 2621410150	BX = 1 piece
		REF 2623410150	BX = 3 pieces
DynaMesh®-SIS direct visible	01 cm x 50 cm	REF 2621470150	BX = 1 piece
		REF 2623470150	BX = 3 pieces

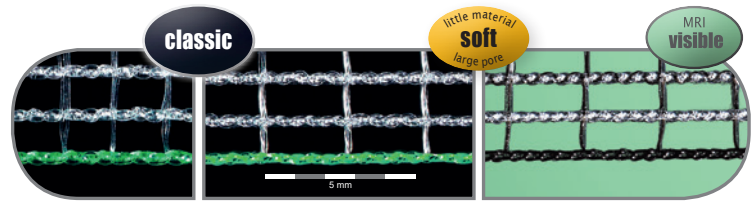


### Use and Properties

Product	DynaMesh®-SIS direct	DynaMesh®-SIS direct soft	DynaMesh®-SIS direct visible
Field of application	stress urinary incontinence (SUI)		
Surgical access	transvaginal		
Surgical technique	TOT - transobturator - outside-in		
Fixation	none		
Specially Warp-knitted Selvedges		●	
Shape stability [TR1,TR12]		●	
Defined elasticity [TR10]		●	
Visible technology	●	●	●
Polymer (monofilament)		PVDF	
Biocompatibility [1 <sup>A</sup> ,2 <sup>A</sup> ,4 <sup>A</sup> ,68 <sup>A</sup> ,100 <sup>A</sup> ,TR1]		●	
Ageing resistance [101,2 <sup>A</sup> ,5 <sup>B</sup> ,52 <sup>B</sup> ,93 <sup>A</sup> ,27 <sup>A</sup> ]		●	
Classification (Klinge's classification [8]) [TR11]		1a	

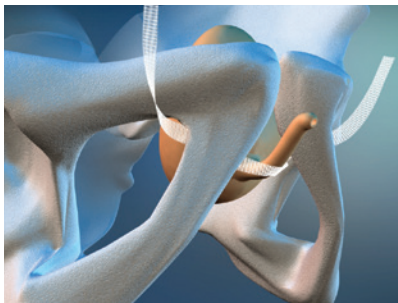
● Applies to all product sizes  
● Does not apply  
[#] Reference "#" (see "References")  
[#<sup>A</sup>] Reference "#" (see "References"), "A": limitation "animal trial"  
[#<sup>B</sup>] Reference "#" (see "References"), "B": limitation "in-vitro trial"  
[TR#] Internal test-report (see "internal test-report references")





DynaMesh®-SIS direct   DynaMesh®-SIS direct soft   DynaMesh®-SIS direct visible

Transobturator (outside-in)



DynaMesh®-SIS direct implants are positioned using the outside-in technique in a transobturator tape position.

Several reusable instruments are available separately to assist the positioning of DynaMesh®-SIS direct implants:



Diameter: 5 - 7 cm

**DynaMesh®-IST01/-IST02/-IST03:**

Instrument set consisting of two instruments (right and left side) for transobturator positioning through transvaginal access using the outside-in technique.



**DynaMesh®-IVT01:**

Instrument for transobturator positioning through transvaginal access using the outside-in technique.

VI045en	DynaMesh®-SIS direct - Animation: SUI Treatment - Transobturator (out/in) - TOT <a href="https://de.dyna-mesh.com/Vi045en">https://de.dyna-mesh.com/Vi045en</a>	
VI021xx	DynaMesh®-SIS direct - Animation: SUI Treatment - Transobturator (out/in) - TOT 8/4 <a href="https://de.dyna-mesh.com/Vi021xx">https://de.dyna-mesh.com/Vi021xx</a>	

Distributed by:

**DAHLHAUSEN®** Italy

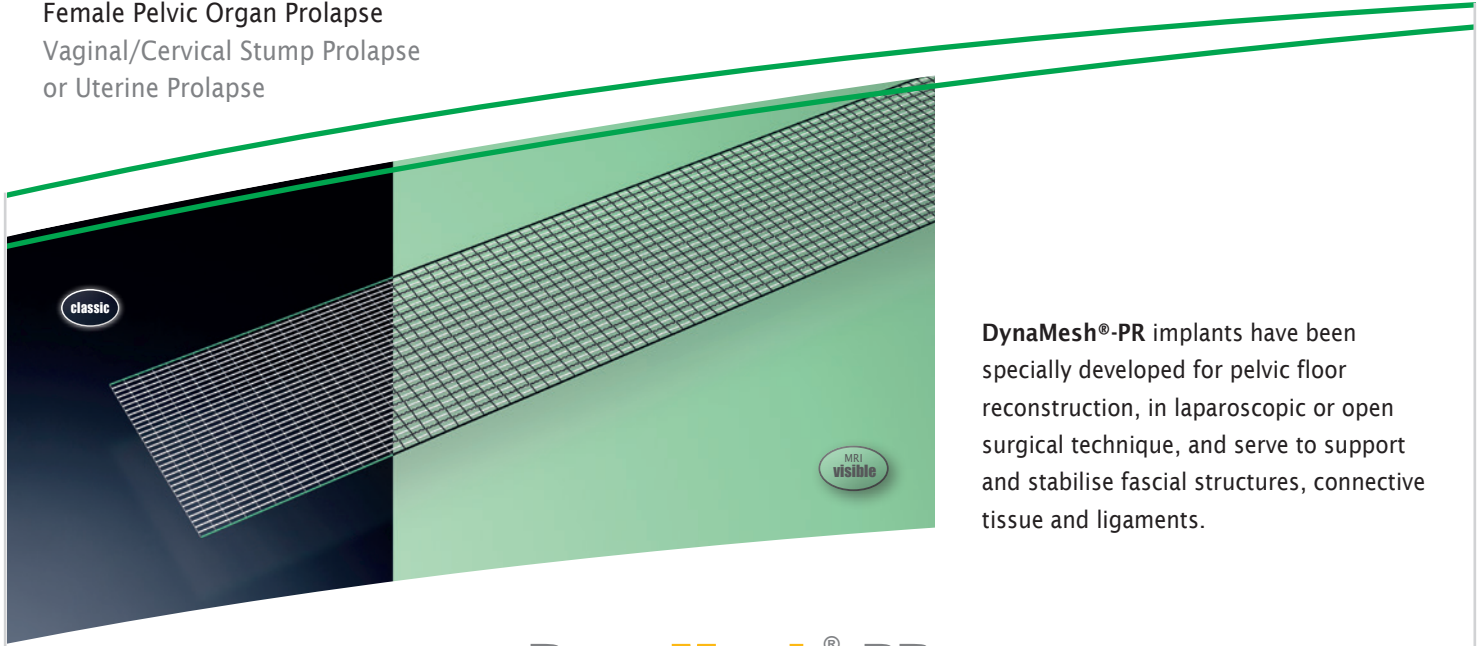
Via Amerigo Vespucci 33, 84098 Pontecagnano Faiano (SA)

Tel: +39 089 759403 Fax: +39 089 2872995

eMail: [italy@dahlhausen.de](mailto:italy@dahlhausen.de)

website: [www.dahlhausen.de](http://www.dahlhausen.de)

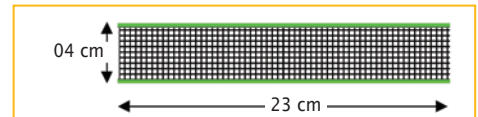
Female Pelvic Organ Prolapse  
Vaginal/Cervical Stump Prolapse  
or Uterine Prolapse



DynaMesh®-PR implants have been specially developed for pelvic floor reconstruction, in laparoscopic or open surgical technique, and serve to support and stabilise fascial structures, connective tissue and ligaments.

## DynaMesh®-PR

<b>DynaMesh®-PR soft</b>	04 cm x 23 cm	REF 2621500423	BX = 1 piece
		REF 2623500423	BX = 3 pieces
<b>DynaMesh®-PR visible</b>	04 cm x 23 cm	REF 2621700423	BX = 1 piece



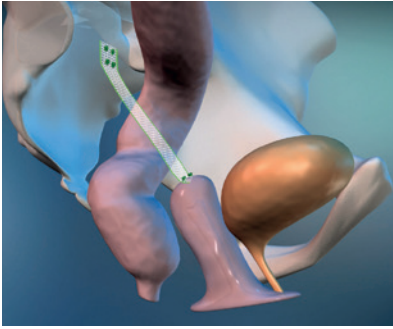
### Use and Properties

Product	DynaMesh®-PR soft	DynaMesh®-PR visible
Field of application	vaginal/cervical stump or uterine prolapse, concomitant cystocele/rectocele	
Surgical access	laparoscopic / open	
Surgical technique	colposacropexy / cervicosacropexy / hysterocacropexy unilateral	
Fixation on vagina / cervix	sutures	
Fixation on sacrum	sutures / tacks	
Specially Warp-knitted Selvedges		●
Shape stability		●
Defined elasticity		●
Visible technology	●	●
Polymer (monofilament)		PVDF
Biocompatibility		●
Ageing resistance		●
Dynamometry		●
Tear propagation resistance		●
Classification (Klinge's classification [8])		1 a

● Applies to all product sizes  
● Does not apply

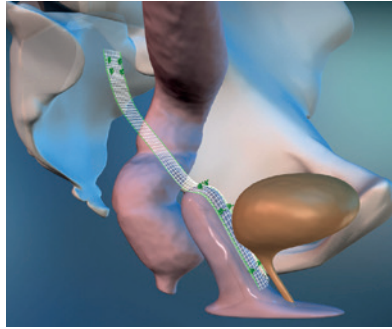
DynaMesh®-PR implants are used in the surgical treatment of the vaginal/cervical stump or uterine prolapse, as well as in the treatment of a concomitant cystocele/rectocele.

**Application Examples:**



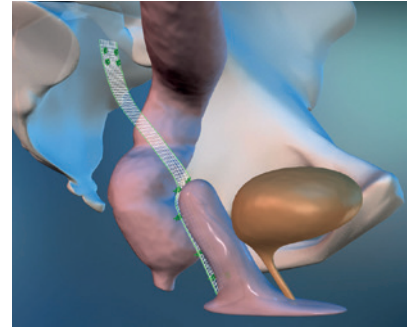
Colpo-/cervicosacropexy

- unilateral
- fixation on vaginal/cervical stump



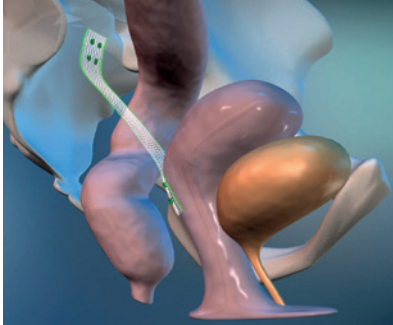
Colpo-/cervicosacropexy

- unilateral
- fixation on vaginal/cervical stump and anterior mesh plasty for concomitant cystocele



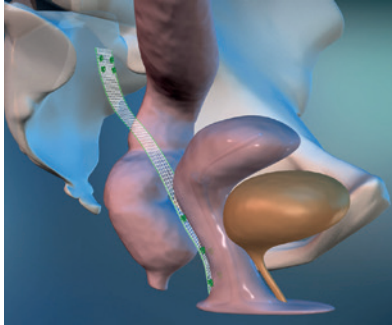
Colpo-/cervicosacropexy

- unilateral
- fixation on vaginal/cervical stump and posterior mesh plasty for concomitant rectocele




Hysterosacropexy

- unilateral
- posterior cervical fixation



Hysterosacropexy

- unilateral
- posterior cervical fixation and posterior mesh plasty for concomitant rectocele

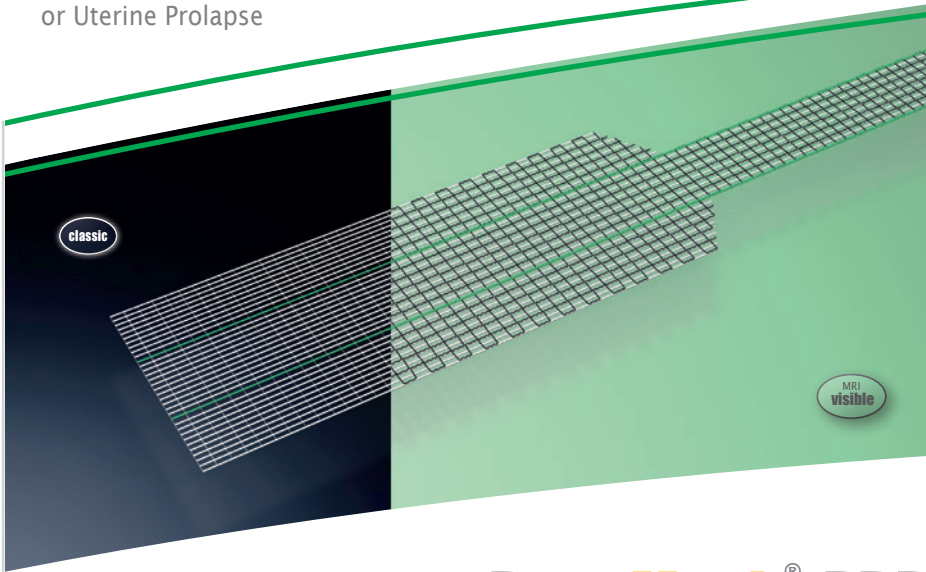
VI086xx	DynaMesh®-PR - Animation: Colposacropexy <a href="https://de.dyna-mesh.com/Vi086xx">https://de.dyna-mesh.com/Vi086xx</a>	
---------	--	---

Distributed by:

**DAHLHAUSEN®** Italy

Via Amerigo Vespucci 33, 84098 Pontecagnano Faiano (SA)  
 Tel: +39 089 759403 Fax: +39 089 2872995  
 eMail: italy@dahlhausen.de  
 website: www.dahlhausen.de

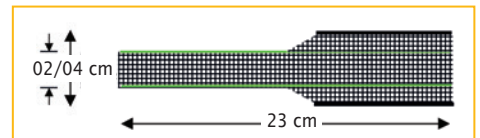
Female Pelvic Organ Prolapse  
Vaginal/Cervical Stump Prolapse  
or Uterine Prolapse



DynaMesh®-PRR implants have been specially developed for pelvic floor reconstruction, in laparoscopic or open surgical technique, and serve to support and stabilise fascial structures, connective tissue and ligaments.

## DynaMesh®-PRR

<b>DynaMesh®-PRR soft</b>	02/04 cm x 23 cm	REF 2621360423	BX = 1 piece
		REF 2623360423	BX = 3 pieces
<b>DynaMesh®-PRR visible</b>	02/04 cm x 23 cm	REF 2621760423	BX = 1 piece



### Use and Properties

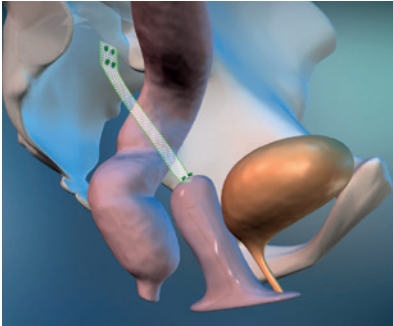
Product	DynaMesh®-PRR soft	DynaMesh®-PRR visible
Field of application	vaginal/cervical stump or uterine prolapse, concomitant cystocele/rectocele	
Surgical access	laparoscopic / open	
Surgical technique	colposacropexy / cervicosacropexy / hysterovacropexy unilateral	
Fixation on vagina / cervix	sutures	
Fixation on sacrum	sutures / tacks	
Specially Warp-knitted Selvedges		●
Shape stability		●
Defined elasticity		●
Visible technology	●	●
Polymer (monofilament)		PVDF
Biocompatibility		●
Ageing resistance		●
Dynamometry		●
Tear propagation resistance		●
Classification (Klinge's classification [8])		1a

● Applies to all product sizes  
● Does not apply



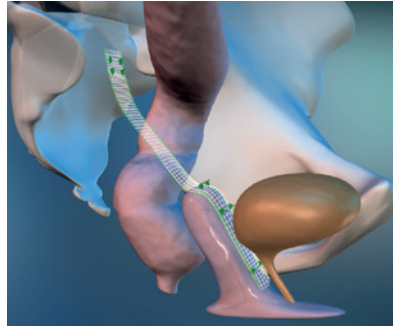
DynaMesh®-PRR implants are used in the surgical treatment of the vaginal/cervical stump or uterine prolapse, as well as in the treatment of a concomitant cystocele/rectocele.

**Application Examples:**



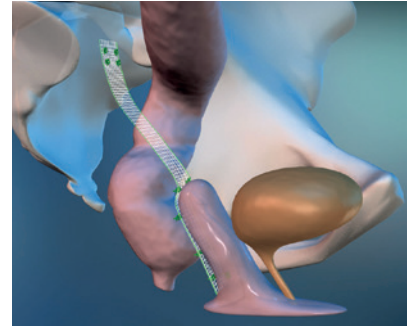
Colpo-/cervicosacropexy

- unilateral
- fixation on vaginal/cervical stump



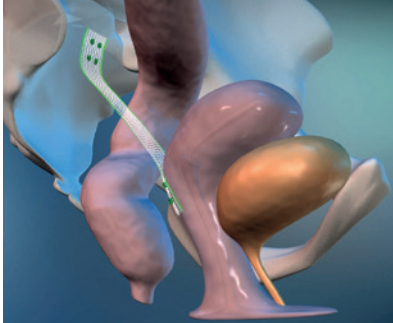
Colpo-/cervicosacropexy

- unilateral
- fixation on vaginal/cervical stump and anterior mesh plasty for concomitant cystocele



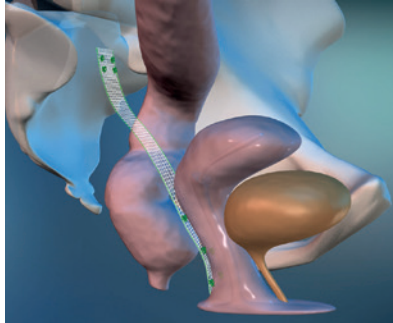
Colpo-/cervicosacropexy

- unilateral
- fixation on vaginal/cervical stump and posterior mesh plasty for concomitant rectocele



Hysterosacropexy

- unilateral
- posterior cervical fixation



Hysterosacropexy

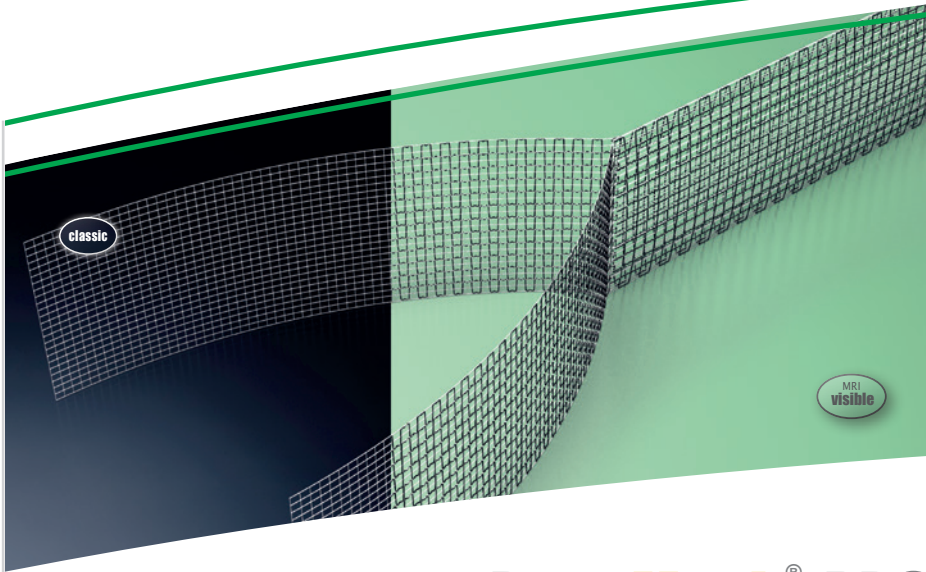
- unilateral
- posterior cervical fixation and posterior mesh plasty for concomitant rectocele

VI083xx	DynaMesh®-PRR - Animation: Colposacropexy <a href="https://de.dyna-mesh.com/Vi083xx">https://de.dyna-mesh.com/Vi083xx</a>	
VI062xx	DynaMesh®-PRR - Animation: Hysterosacropexy <a href="https://de.dyna-mesh.com/Vi062xx">https://de.dyna-mesh.com/Vi062xx</a>	

Distributed by:

**DAHLHAUSEN®** *Italy*

Via Amerigo Vespucci 33, 84098 Pontecagnano Faiano (SA)  
Tel: +39 089 759403 Fax: +39 089 2872995  
eMail: [italy@dahlhausen.de](mailto:italy@dahlhausen.de)  
website: [www.dahlhausen.de](http://www.dahlhausen.de)

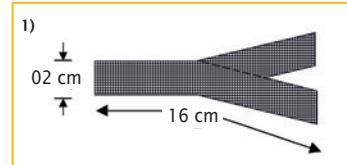


**DynaMesh®-PRS** implants have been specially developed for pelvic floor reconstruction, in laparoscopic or open surgical technique, and serve to support and stabilise fascial structures, connective tissue and ligaments.

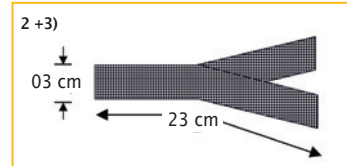
The implants are used in the surgical treatment of the vaginal or cervical stump prolapse, as well as in the treatment of a concomitant cystocele and/or rectocele.

## DynaMesh®-PRS

**DynaMesh®-PRS soft**    <sup>1)</sup> 02 cm x 16 cm    REF 2621350216    BX = 1 piece

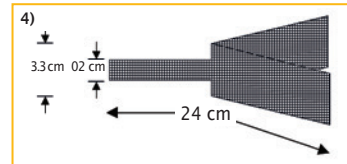


**DynaMesh®-PRS soft**    <sup>2)</sup> 03 cm x 23 cm    REF 2621350323    BX = 1 piece

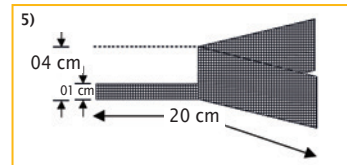


**DynaMesh®-PRS visible**    <sup>3)</sup> 03 cm x 23 cm    REF 2621750323    BX = 1 piece

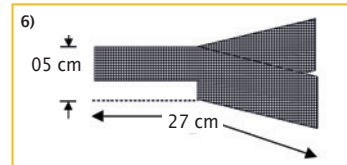
**DynaMesh®-PRS visible**    <sup>4)</sup> 3.3 cm x 24 cm    REF 2621750424    BX = 1 piece  
REF 2621750425    BX = 10 pieces



**DynaMesh®-PRS visible**    <sup>5)</sup> 04 cm x 20 cm    REF 2621750420    BX = 1 piece  
REF 2621750421    BX = 10 pieces



**DynaMesh®-PRS soft**    <sup>6)</sup> 05 cm x 27 cm    REF 2621350527    BX = 1 piece

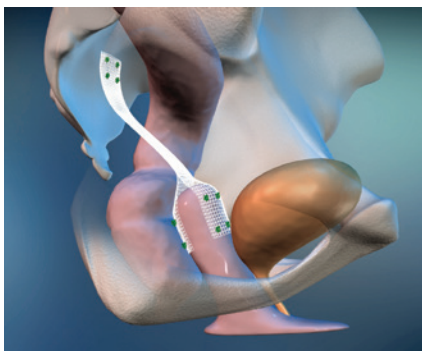


VI046xx	DynaMesh®-PRS - Animation: Colposacropexy <a href="https://de.dyna-mesh.com/Vi046xx">https://de.dyna-mesh.com/Vi046xx</a>	
VI048xx	DynaMesh®-PRS - Animation: Colposacropexy <a href="https://de.dyna-mesh.com/Vi048xx">https://de.dyna-mesh.com/Vi048xx</a>	
VI067xx	DynaMesh® MRI - Animation: MRI Reconstruction with DynaMesh®-PRS visible <a href="https://de.dyna-mesh.com/Vi067xx">https://de.dyna-mesh.com/Vi067xx</a>	

## Use and Properties

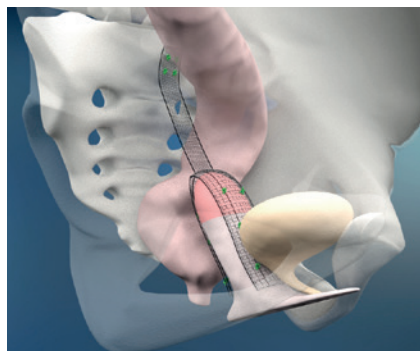
Product	DynaMesh®-PRS soft 02 cm x 16 cm <sup>(1)</sup> 03 cm x 23 cm <sup>(2)</sup> 05 cm x 27 cm <sup>(6)</sup>	DynaMesh®-PRS visible 03 cm x 23 cm <sup>(3)</sup> 3.3 cm x 24 cm <sup>(4)</sup> 04 cm x 20 cm <sup>(5)</sup>
Field of application	vaginal/cervical stump prolapse, concomitant cystocele/rectocele	
Surgical access	laparoscopic / open	
Surgical technique	colposacropepy / cervicosacropepy unilateral	
Fixation on vagina / cervix	sutures	
Fixation on sacrum	sutures / tacks	
Specially Warp-knitted Selvedges	●	
Shape stability	●	
Defined elasticity	●	
Visible technology	● (1,2,6)	● (3,4,5)
Polymer (monofilament)	PVDF	
Biocompatibility	●	
Ageing resistance	●	
Dynamometry	●	
Tear propagation resistance	●	
Classification (Klinge's classification [8])	1a	

### Application Examples:



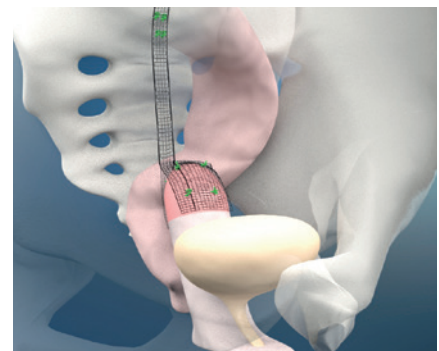
Colpo-/cervicosacropepy

- unilateral



Colpo-/cervicosacropepy

- unilateral
- anterior/posterior mesh plasty  
(for concomitant  
cystocele/rectocele)



Colpo-/cervicosacropepy

- unilateral

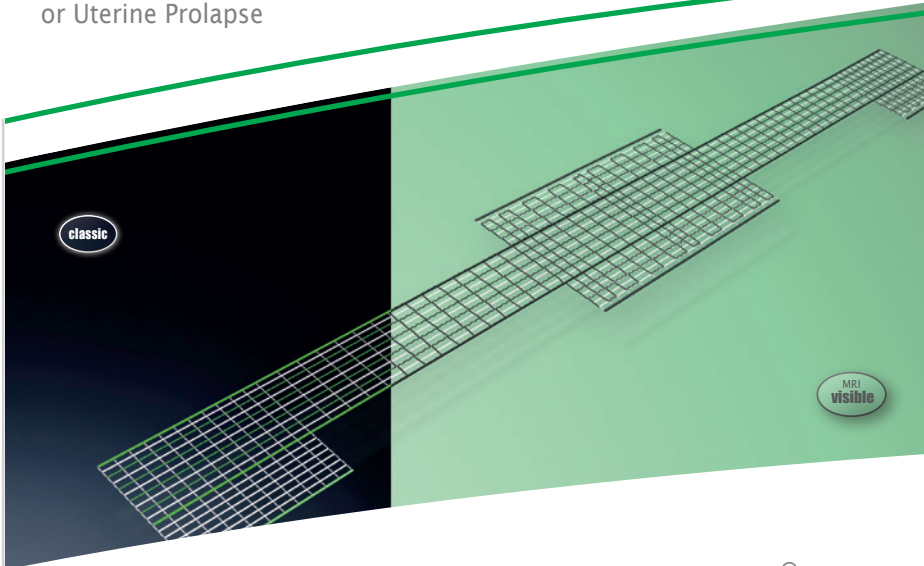
● Applies to all product sizes  
● Does not apply

Distributed by:

**DAHLHAUSEN®** *Italy*

Via Amerigo Vespucci 33, 84098 Pontecagnano Faiano (SA)  
Tel: +39 089 759403 Fax: +39 089 2872995  
eMail: italy@dahlhausen.de  
website: www.dahlhausen.de

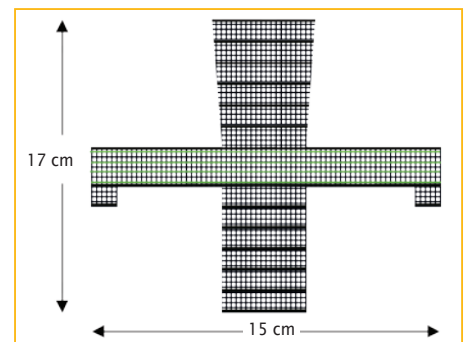
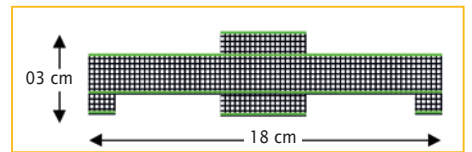
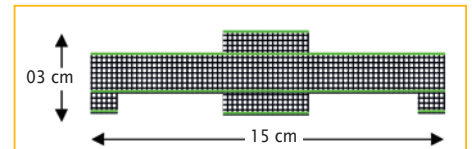
Female Pelvic Organ Prolapse  
Vaginal/Cervical Stump Prolapse  
or Uterine Prolapse



**DynaMesh®-PRP** implants have been specially developed for pelvic floor reconstruction, in laparoscopic or open surgical technique, and serve to support and stabilise fascial structures, connective tissue and ligaments. The implants are used in the surgical treatment of a prolapse of the vaginal/cervical stump or uterine prolapse in the pectopexy technique.

## DynaMesh®-PRP

<b>DynaMesh®-PRP soft</b>	<sup>1)</sup> 03 cm x 15 cm	REF 2626540315	BX = 1 piece
	<sup>1)</sup> 03 cm x 15 cm	REF 2627540315	BX = 3 pieces
<b>DynaMesh®-PRP visible</b>	<sup>2)</sup> 03 cm x 15 cm	REF 2627540316	BX = 1 piece
<b>DynaMesh®-PRP visible</b>	<sup>3)</sup> 03 cm x 18 cm	REF 2627540318	BX = 1 piece
		REF 2627540319	BX = 3 pieces
<b>DynaMesh®-PRP visible</b>	<sup>4)</sup> 17 cm x 15 cm	REF 2627541715	BX = 1 piece
		REF 2627541716	BX = 3 pieces

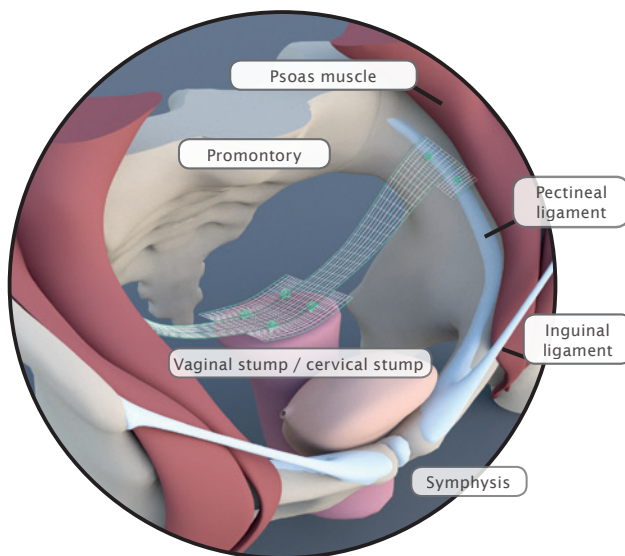


VI042xx	DynaMesh®-PRP - Animation: Pectopexy <a href="https://de.dyna-mesh.com/Vi042xx">https://de.dyna-mesh.com/Vi042xx</a>	
VI061xx	DynaMesh®-PRP - Animation: Hysteropectopexy - Anterior Fixation <a href="https://de.dyna-mesh.com/Vi061xx">https://de.dyna-mesh.com/Vi061xx</a>	
VI053xx	DynaMesh®-PRP - Animation: Hysteropectopexy - Posterior Fixation <a href="https://de.dyna-mesh.com/Vi053xx">https://de.dyna-mesh.com/Vi053xx</a>	
VI054xx	DynaMesh®-PRP - Animation: Pectopexy with Anterior & Posterior Mesh Repair <a href="https://de.dyna-mesh.com/Vi054xx">https://de.dyna-mesh.com/Vi054xx</a>	
VI069xx	DynaMesh® MRI - Animation: MRI Reconstruction with DynaMesh®-PRP visible <a href="https://de.dyna-mesh.com/Vi069xx">https://de.dyna-mesh.com/Vi069xx</a>	



## Use and Properties

Product	DynaMesh®-PRP soft <sup>(1)</sup> / visible <sup>(2)</sup> 03 cm x 15 cm	DynaMesh®-PRP visible 03 cm x 18 cm <sup>(3)</sup>	DynaMesh®-PRP visible 17 cm x 15 cm <sup>(4)</sup>
Field of application	vaginal/cervical stump or uterine prolapse	vaginal stump or uterine prolapse	vaginal/cervical stump prolapse, concomitant cystocele/rectocele
Surgical access	laparoscopic / open		
Surgical technique	pectopexy bilateral		
Fixation on vagina / cervix	sutures		
Fixation on pectineal ligament	sutures		
Specially Warp-knitted Selvedges	●		
Shape stability	●		
Defined elasticity	●		
Visible technology	● (1) / ● (2)	● (3,4)	
Polymer (monofilament)	PVDF		
Biocompatibility	●		
Ageing resistance	●		
Dynamometry	●		
Tear propagation resistance	●		
Classification (Klinge's classification [8])	1a		



## Pectopexy Bilateral Fixation on the Pectineal Ligament

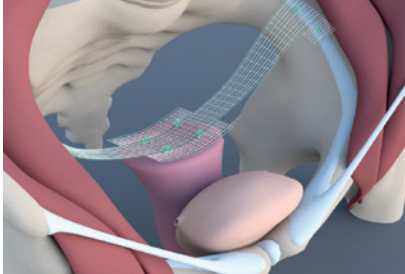
Fig. left:  
Apical mesh repair following hysterectomy with  
**DynaMesh®-PRP soft / visible (03 cm x 15 cm)**

● Applies to all product sizes  
● Does not apply

Distributed by:

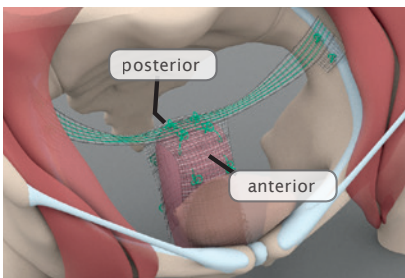
**DAHLHAUSEN®** Italy

Via Amerigo Vespucci 33, 84098 Pontecagnano Faiano (SA)  
Tel: +39 089 759403 Fax: +39 089 2872995  
eMail: italy@dahlhausen.de  
website: www.dahlhausen.de



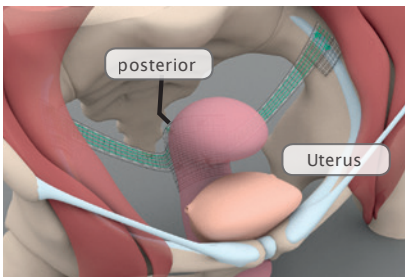
Pectopexy after vaginal/cervical prolapse:

- Two implant sizes are available in the following dimensions  
**DynaMesh®-PRP soft / visible 03 cm x 15 cm** and  
**DynaMesh®-PRP visible 03 cm x 18 cm.**
- With greatly shortened vaginas, e.g., following a radical hysterectomy,  
**DynaMesh®-PRP visible 03 cm x 18 cm** can be optionally used.



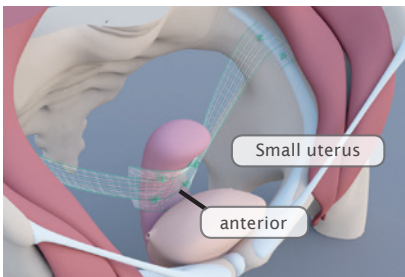
Pectopexy after vaginal/cervical prolapse with concomitant cystocele and/or rectocele: (pulsion cystocele / rectocele)

- Additional stabilisation of the affected vaginal wall can be achieved with **DynaMesh®-PRP visible 17 cm x 15 cm.**



Pectopexy after uterine prolapse with uterine preservation:

- With a normal sized uterus, **DynaMesh®-PRP visible 03 cm x 18 cm** should be used and fixed in place on the posterior cervix.



Pectopexy after uterine prolapse with uterine preservation:

- With smaller uteri (below 100 g), anterior fixation of **DynaMesh®-PRP soft / visible 03 cm x 15 cm** can be selected as an alternative.

Distributed by:

**DAHLHAUSEN®** Italy

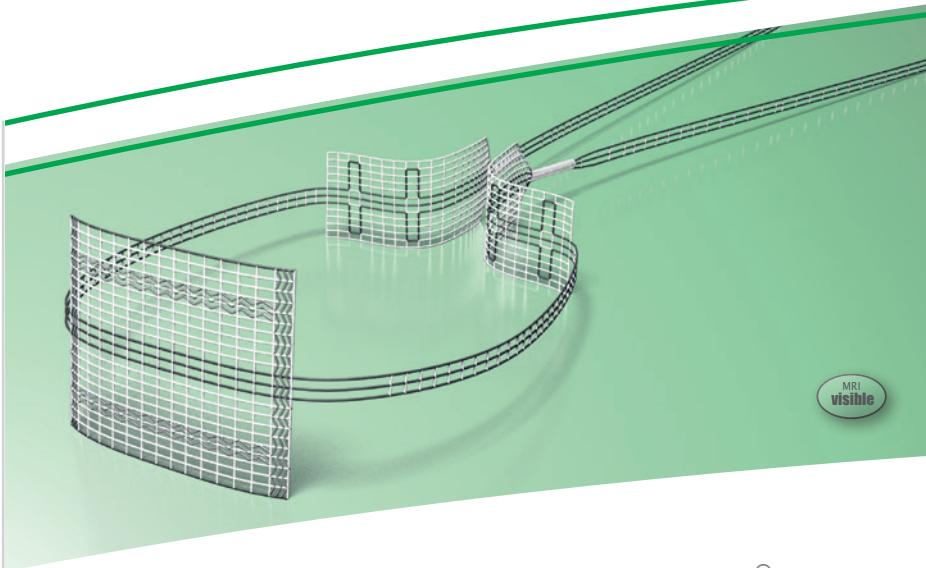
Via Amerigo Vespucci 33, 84098 Pontecagnano Faiano (SA)

Tel: +39 089 759403 Fax: +39 089 2872995

eMail: [italy@dahlhausen.de](mailto:italy@dahlhausen.de)

website: [www.dahlhausen.de](http://www.dahlhausen.de)

Female Pelvic Organ Prolapse  
Cervical Stump Prolapse

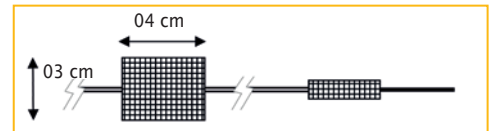


DynaMesh®-CESA implants have been specially developed for pelvic floor reconstruction, and particularly for reinforcing or replacing the uterosacral ligaments, in laparoscopic or open surgical technique.

The implants are used in the treatment of a prolapse of the internal genitalia, such as a cervical stump prolapse.

## DynaMesh®-CESA

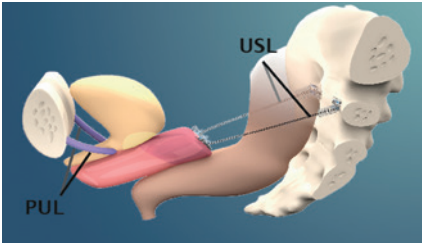
<b>DynaMesh®-CESA</b>	03 cm x 04 cm	REF 2621740404	BX = 1 piece
		REF 2623740404	BX = 3 pieces



### Use and Properties

Product	DynaMesh®-CESA
Field of application	cervical stump prolapse
Surgical access	laparoscopic / open
Surgical technique	cervicosacropexy (CESA) bilateral
Fixation on cervical stump	sutures
Fixation on sacrum	sutures / tacks
Specially Warp-knitted Selvedges	●
Shape stability	●
Defined elasticity	●
Visible technology	●
Polymer (monofilament)	PVDF
Biocompatibility	●
Ageing resistance	●
Dynamometry	●
Tear propagation resistance	●
Classification (Klinge's classification [8])	1a

● Applies to all product sizes

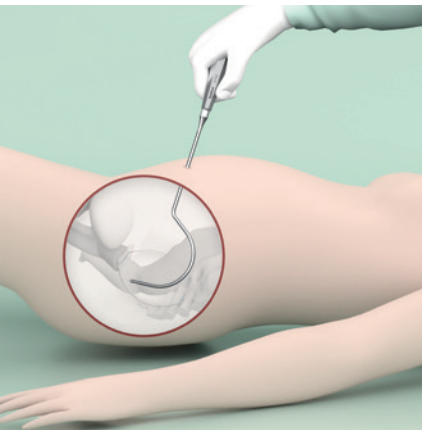


**DynaMesh®-CESA**  
(CErvice-SACropexy)

The surgical technique CESA is a modified abdominal cervicosacropepy procedure (laparoscopic/open), in which the uterosacral ligaments are bilaterally reinforced or replaced by the implant.



**DynaMesh®-IVT02** instrument for **DynaMesh®-CESA** in retroperitoneal tape position through laparotomic access.  
Reusable instrument made of surgical steel.  
Length: 32 cm



- Extraperitoneal tunnelling
- Anatomically adapted to the pelvis
- Eyelet on instrument tip with slanted, atraumatic edges
- Use in laparoscopy
- Reusable instrument

VI094xx	DynaMesh®-CESA - Animation: Cervicosacropepy - Bilateral Fixation - Level Promontory <a href="https://de.dyna-mesh.com/Vi094xx">https://de.dyna-mesh.com/Vi094xx</a>	
VI084xx	DynaMesh®-CESA - Animation: Cervicosacropepy - Bilateral Fixation - Level S2 <a href="https://de.dyna-mesh.com/Vi084xx">https://de.dyna-mesh.com/Vi084xx</a>	

Distributed by:

**DAHLHAUSEN®** Italy

Via Amerigo Vespucci 33, 84098 Pontecagnano Faiano (SA)

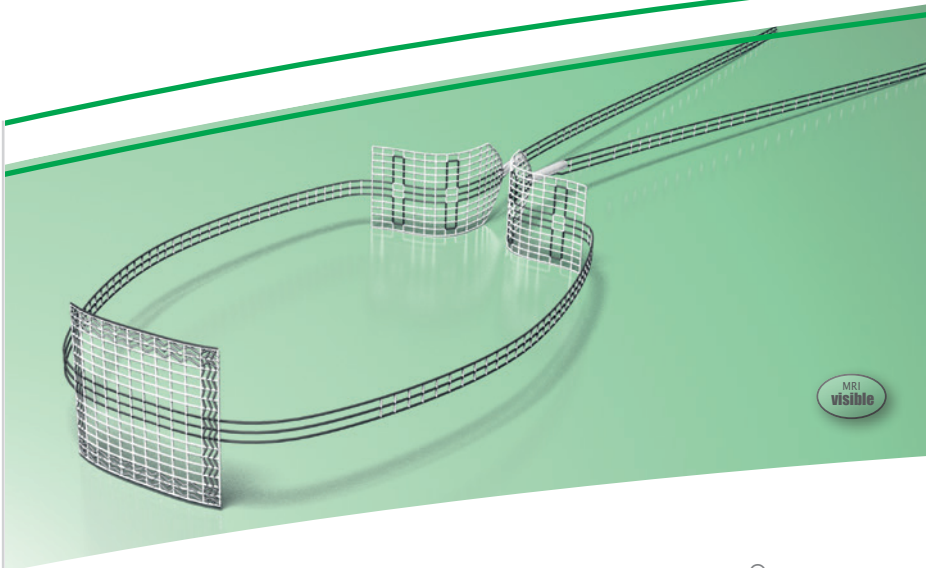
Tel: +39 089 759403 Fax: +39 089 2872995

eMail: [italy@dahlhausen.de](mailto:italy@dahlhausen.de)

website: [www.dahlhausen.de](http://www.dahlhausen.de)



Female Pelvic Organ Prolapse  
Vaginal Stump Prolapse

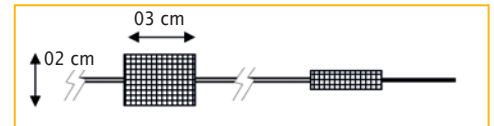


DynaMesh®-VASA implants have been specially developed for pelvic floor reconstruction, and particularly for reinforcing or replacing the uterosacral ligaments, in laparoscopic or open surgical technique.

The implants are used in the treatment of a prolapse of the internal genitalia, such as a vaginal stump prolapse.

## DynaMesh®-VASA

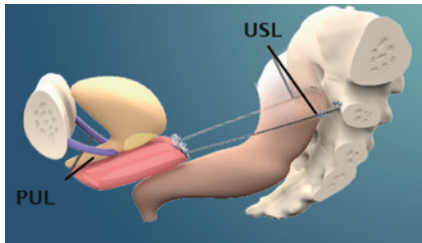
DynaMesh®-VASA	02 cm x 03 cm	REF 2621740203	BX = 1 piece
		REF 2623740203	BX = 3 pieces



### Use and Properties

Product	DynaMesh®-VASA
Field of application	vaginal stump prolapse
Surgical access	laparoscopic / open
Surgical technique	colposacropexy (VASA) bilateral
Fixation on vaginal stump	sutures
Fixation on sacrum	sutures / tacks
Specially Warp-knitted Selvedges	●
Shape stability	●
Defined elasticity	●
Visible technology	●
Polymer (monofilament)	PVDF
Biocompatibility	●
Ageing resistance	●
Dynamometry	●
Tear propagation resistance	●
Classification (Klinge's classification [8])	1a

● Applies to all product sizes

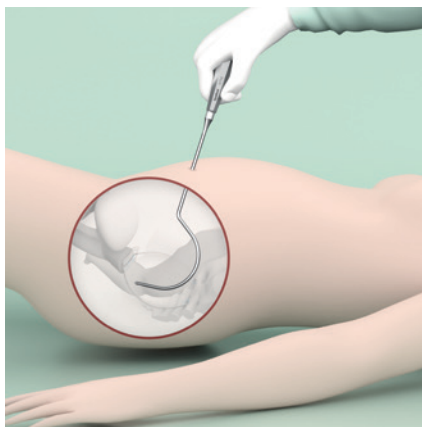


**DynaMesh®-VASA**  
(VAgino-SAcropexy)

The surgical technique VASA is a modified abdominal colposacropexy procedure (laparoscopic/open), in which the uterosacral ligaments are bilaterally reinforced or replaced by the implant.



**DynaMesh®-IVT02** instrument for **DynaMesh®-VASA** in retroperitoneal tape position through laparotomic access.  
Reusable instrument made of surgical steel.  
Length: 32 cm



- Extraperitoneal tunnelling
- Anatomically adapted to the pelvis
- Eyelet on instrument tip with slanted, atraumatic edges
- Use in laparoscopy
- Reusable instrument

Distributed by:

**DAHLHAUSEN®** Italy

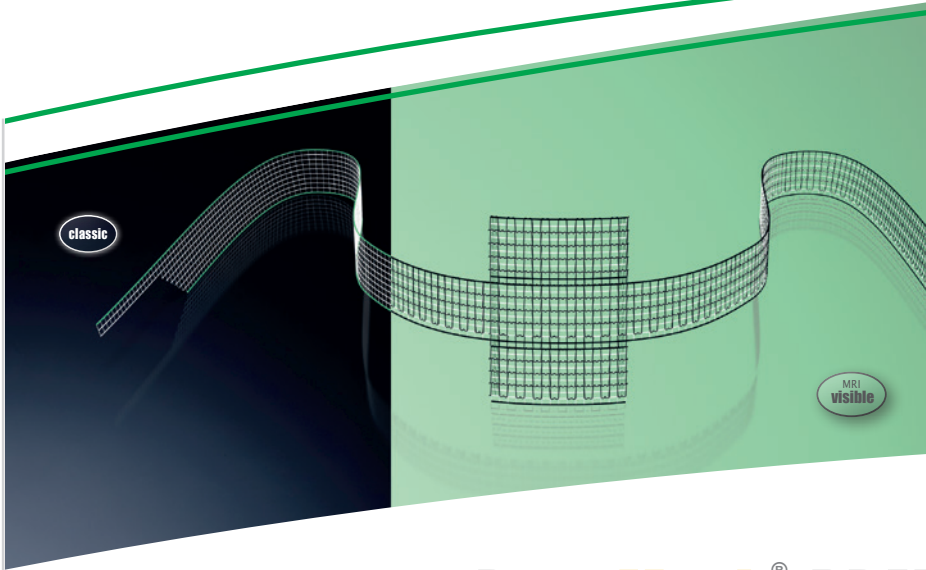
Via Amerigo Vespucci 33, 84098 Pontecagnano Faiano (SA)

Tel: +39 089 759403 Fax: +39 089 2872995

eMail: [italy@dahlhausen.de](mailto:italy@dahlhausen.de)

website: [www.dahlhausen.de](http://www.dahlhausen.de)

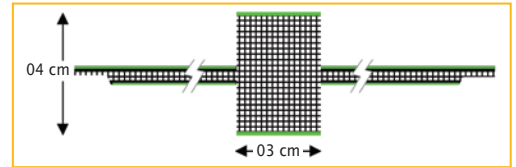
Male Urinary Incontinence  
Stress Urinary Incontinence



DynaMesh®-PRM implants are used to support and stabilise connective tissue structures and ligaments. Common applications are suburethral slings for treating male stress urinary incontinence.

## DynaMesh®-PRM

DynaMesh®-PRM	04 cm x 03 cm	REF 2630330453	BX = 1 piece
DynaMesh®-PRM visible	04 cm x 03 cm	REF 2631730453	BX = 1 piece

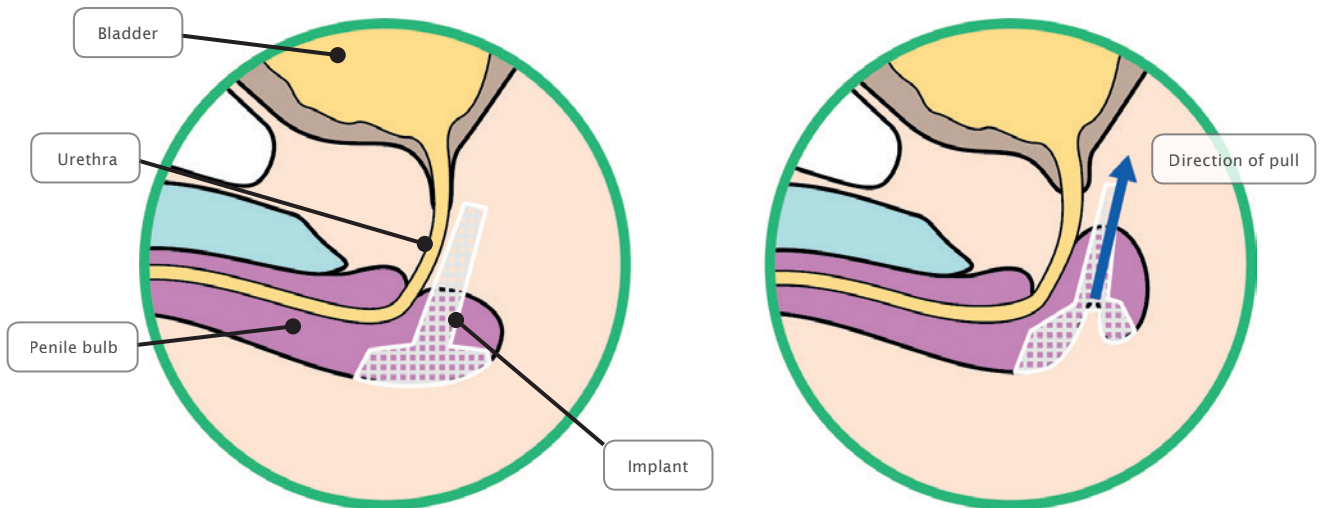


### Use and Properties

Product	DynaMesh®-PRM	DynaMesh®-PRM visible
Field of application	stress urinary incontinence (SUI)	
Surgical access	perineal	
Surgical technique	Male Sling TOT - transobturator - outside-in	
Fixation	synthetic adhesives / sutures	
Specially Warp-knitted Selvedges		●
Shape stability		●
Defined elasticity		●
Visible technology	●	●
Polymer (monofilament)		PVDF
Biocompatibility		●
Ageing resistance		●
Dynamometry		●
Tear propagation resistance		●
Classification (Klinge's classification [8])		1 a

● Applies to all product sizes  
● Does not apply

Application of the implant through perineal access  
Transobturator position



**DynaMesh®-IST03**  
Diameter: 5 cm

**DynaMesh®-IST02**  
Diameter: 7 cm

**DynaMesh®-IST03/-IST02:**

Instrument set consisting of two instruments (right and left side) for transobturator positioning using the outside-in technique.

Distributed by:



Via Amerigo Vespucci 33, 84098 Pontecagnano Faiano (SA)

Tel: +39 089 759403 Fax: +39 089 2872995

eMail: [italy@dahlhausen.de](mailto:italy@dahlhausen.de)

website: [www.dahlhausen.de](http://www.dahlhausen.de)



**Reusable Instruments**  
Manufactured from surgical steel (resterilisable)

For **transobturator** application

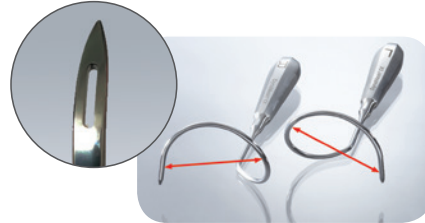
**DynaMesh®-IST03**

Surgical instrument

Diameter: 5 cm

REF 2620000005

BX = 1 set (l+r)



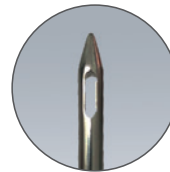
**DynaMesh®-IST01**

Surgical instrument

Diameter: 6 cm

REF 2620000003

BX = 1 set (l+r)



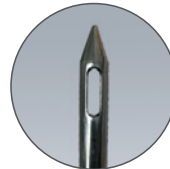
**DynaMesh®-IST02**

Surgical instrument

Diameter: 7 cm

REF 2620000004

BX = 1 set (l+r)

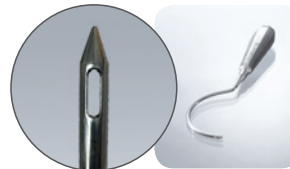


**DynaMesh®-IVT01**

Surgical instrument

REF 2620000002

BX = 1 piece



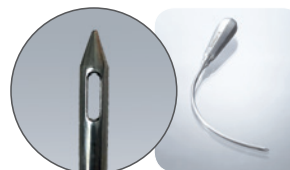
For **retropubic** application

**DynaMesh®-ISR01**

Surgical instrument

REF 2620000001

BX = 1 piece



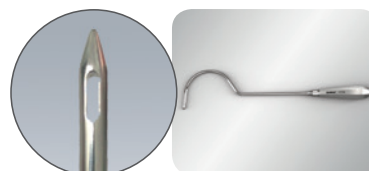
For **laparotomical** application  
of DynaMesh®-CESA/-VASA

**DynaMesh®-IVT02**

Surgical instrument

REF 2620000006

BX = 1 piece



Distributed by:

**DAHLHAUSEN®** *Italy*

Via Amerigo Vespucci 33, 84098 Pontecagnano Faiano (SA)

Tel: +39 089 759403 Fax: +39 089 2872995

eMail: [italy@dahlhausen.de](mailto:italy@dahlhausen.de)

website: [www.dahlhausen.de](http://www.dahlhausen.de)

## Implant Material

1. Klinge U, Klosterhalfen B, Ottinger AP, et al (2002)  
**PVDF as a new polymer for the construction of surgical meshes.**  
*Biomaterials* 23:3487-3493
2. Klink CD, Junge K, Binnebösel M, et al (2011)  
**Comparison of long-term biocompatibility of PVDF and PP meshes.**  
*J Invest Surg* 24:292-299. <https://doi.org/10.3109/08941939.2011.589883>
3. Gerullis H, Georgas E, Eimer C, et al (2011)  
**Evaluation of Biocompatibility of Alloplastic Materials: Development of a Tissue Culture In Vitro Test System.**  
*Surgical technology international* 21:21
4. Gerullis H, Klosterhalfen B, Borós M, et al (2013)  
**IDEAL in Meshes for Prolapse, Urinary Incontinence, and Hernia Repair.**  
*Surg Innov.* <https://doi.org/10.1177/1553350612472987>
5. Laroche G, Marois Y, Schwarz E, et al (1995)  
**Polyvinylidene fluoride monofilament sutures: can they be used safely for long-term anastomoses in the thoracic aorta?**  
*Artif Organs* 19:1190-1199
10. Berger D, Bientzle M (2008)  
**Polyvinylidene fluoride: a suitable mesh material for laparoscopic incisional and parastomal hernia repair!**  
*Hernia* 13:167-172. <https://doi.org/10.1007/s10029-008-0435-4>
11. Junge K, Binnebösel M, Rosch R, et al (2008)  
**Adhesion formation of a polyvinylidenfluoride/polypropylene mesh for intra-abdominal placement in a rodent animal model**  
*Surgical Endoscopy* 23:327-333. <https://doi.org/10.1007/s00464-008-9923-y>
20. Göretzlehner U, Müllen A (2007)  
**PVDF als Implantat-Werkstoff in der Urogynäkologie.**  
*BIOmaterialien* 8 (S1):28-29
27. Mary C, Marois Y, King MW, et al (1998)  
**Comparison of the in vivo behavior of polyvinylidene fluoride and polypropylene sutures used in vascular surgery.**  
*ASAIO J* 44:199-206
50. Roman S, Urbánková I, Callewaert G, et al (2016)  
**Evaluating Alternative Materials for the Treatment of Stress Urinary Incontinence and Pelvic Organ Prolapse: A Comparison of the In Vivo Response to Meshes Implanted in Rabbits.**  
*The Journal of Urology* 196:261-269. <https://doi.org/10.1016/j.juro.2016.02.067>
52. Silva RA, Silva PA, Carvalho ME (2007)  
**Degradation studies of some polymeric biomaterials: Polypropylene (PP) and polyvinylidene difluoride (PVDF).**  
*THERMEC 2006, Pts 1-5* 539-543:573-576
68. Conze J, Junge K, Weiss C, et al (2008)  
**New polymer for intra-abdominal meshes-PVDF copolymer.**  
*J Biomed Mater Res Part B Appl Biomater* 87:321-328. <https://doi.org/10.1002/jbm.b.31106>

## Implant Material

91. Hara T (2004)  
**Ten-Year Results of Anterior Chamber Fixation of the Posterior Chamber Intraocular Lens.**  
*Arch Ophthalmol* 122:1112. <https://doi.org/10.1001/archophth.122.8.1112>
93. Wang H, Klosterhalfen B, Müllen A, et al (2021)  
**Degradation resistance of PVDF mesh in vivo in comparison to PP mesh.**  
*J Mech Behav Biomed Mater* 119:104490. <https://doi.org/10.1016/j.jmbbm.2021.104490>
100. Karabulut A, Simavlı SA, Abban GM, et al (2016)  
**Tissue reaction to urogynecologic meshes: effect of steroid soaking in two different mesh models.**  
*Int Urogynecol J* 27:1583–1589. <https://doi.org/10.1007/s00192-016-3013-9>

6. Mühl T, Binnebösel M, Klinge U, Goedderz T (2008)  
**New objective measurement to characterize the porosity of textile implants.**  
*Journal of Biomedical Materials Research Part B: Applied Biomaterials* 84B:176–183. <https://doi.org/10.1002/jbm.b.30859>
8. Klinge U, Klosterhalfen B (2012)  
**Modified classification of surgical meshes for hernia repair based on the analyses of 1,000 explanted meshes.**  
*Hernia* 16:251–258. <https://doi.org/10.1007/s10029-012-0913-6>
25. Klosterhalfen B, Junge K, Klinge U (2005)  
**The lightweight and large porous mesh concept for hernia repair.**  
*Expert Rev Med Devices* 2:103–117. <https://doi.org/10.1586/17434440.2.1.103>
26. Otto J, Kaldenhoff E, Kirschner-Hermanns R, et al (2013)  
**Elongation of textile pelvic floor implants under load is related to complete loss of effective porosity, thereby favouring incorporation in scar plates.**  
*Journal of Biomedical Materials Research Part A n/a-n/a*. <https://doi.org/10.1002/jbm.a.34767>
38. Kaldenhoff E, Klinge U, Klosterhalfen B, et al (2013)  
**Von der Prolaps- zur Problempatientin: Schenken wir der Qualität von Netzimplantaten genügend Aufmerksamkeit?**  
*Der Gynäkologe* 46:469–476. <https://doi.org/10.1007/s00129-012-3124-4>
53. Zhu L-M, Schuster P, Klinge U (2015)  
**An overview of crucial mesh parameters.**  
*World Journal of Gastrointestinal Surgery*
102. Klinge U, Park J-K, Klosterhalfen B (2013)  
**The Ideal Mesh.**  
*Pathobiology* 80:169–175. <https://doi.org/10.1159/000348446>
103. Klosterhalfen B, Klinge U (2013)  
**Retrieval study at 623 human mesh explants made of polypropylene - impact of mesh class and indication for mesh removal on tissue reaction.**  
*Journal of Biomedical Materials Research Part B: Applied Biomaterials n/a-n/a*. <https://doi.org/10.1002/jbmb.32958>
104. Klinge U, Junge K, Spellerberg B, et al (2002)  
**Do multifilament alloplastic meshes increase the infection rate? Analysis of the polymeric surface, the bacteria adherence, and the in vivo consequences in a rat model.**  
*J Biomed Mater Res* 63:765–771. <https://doi.org/10.1002/jbm.10449>
105. Klinge U, Klosterhalfen B, Birkenhauer V, et al (2002)  
**Impact of polymer pore size on the interface scar formation in a rat model.**  
*J Surg Res* 103:208–214. <https://doi.org/10.1006/jsre.2002.6358>



## DynaMesh® visible

7. Hansen NL, Barabasch A, Distelmaier M, et al (2013)  
**First In-Human Magnetic Resonance Visualization of Surgical Mesh Implants for Inguinal Hernia Treatment.**  
*Invest Radiol.* <https://doi.org/10.1097/RLI.0b013e31829806ce>
29. Kuehnert N, Kraemer NA, Otto J, et al (2011)  
**In vivo MRI visualization of mesh shrinkage using surgical implants loaded with superparamagnetic iron oxides.**  
*Surgical Endoscopy* 26:1468-1475. <https://doi.org/10.1007/s00464-011-2057-7>
51. Köhler G, Pallwein-Prettner L, Lechner M, et al (2015)  
**First human magnetic resonance visualisation of prosthetics for laparoscopic large hiatal hernia repair.**  
*Hernia* 19:975-982. <https://doi.org/10.1007/s10029-015-1398-x>
54. Muysoms F, Beckers R, Kyle-Leinhase I (2018)  
**Prospective cohort study on mesh shrinkage measured with MRI after laparoscopic ventral hernia repair with an intraperitoneal iron oxide-loaded PVDF mesh.**  
*Surgical Endoscopy* 32:2822-2830. <https://doi.org/10.1007/s00464-017-5987-x>
56. Köhler G, Pallwein-Prettner L, Koch OO, et al (2015)  
**Magnetic Resonance-Visible Meshes for Laparoscopic Ventral Hernia Repair.**  
*JLS : Journal of the Society of Laparoendoscopic Surgeons* 19:e2014.00175. <https://doi.org/10.4293/JLS.2014.00175>
62. Köhler G, Wundsam H, Pallwein-Prettner L, et al (2015)  
**Magnetic resonance visible 3-D funnel meshes for laparoscopic parastomal hernia prevention and treatment.**  
*European Surgery* 47:127-132. <https://doi.org/10.1007/s10353-015-0319-7>
69. Kuehnert N, Otto J, Conze J, et al (2014)  
**Time-Dependent Changes of Magnetic Resonance Imaging-Visible Mesh Implants in Patients**
70. Hansen NL, Ciritsis A, Otto J, et al (2015)  
**Utility of Magnetic Resonance Imaging to Monitor Surgical Meshes: Correlating Imaging and Clinical Outcome of Patients Undergoing Inguinal Hernia Repair.**  
*Invest Radiol.* <https://doi.org/10.1097/RLI.000000000000148>
71. Weyhe D, Klinge U, Uslar VN, et al (2019)  
**Follow Up Data of MRI-Visible Synthetic Meshes for Reinforcement in Large Hiatal Hernia in Comparison to None-Mesh Repair - A Prospective Cohort Study.**  
*Front Surg* 6:. <https://doi.org/10.3389/fsurg.2019.00017>
76. Lechner M, Meissnitzer M, Borhanian K, et al (2019)  
**Surgical and radiological behavior of MRI-depictable mesh implants after TAPP repair: the IRONMAN study.**  
*Hernia.* <https://doi.org/10.1007/s10029-019-02019-2>
90. Özveri E, Şanlı DET, Yıldırım D, et al (2020)  
**Magnetic resonance visualization of iron-loaded meshes in patients with pain after inguinal hernia repair.**  
*Hernia.* <https://doi.org/10.1007/s10029-020-02168-9>

## Implant Fixation

79. Villalobos RN, Mias MC, Gas C, et al (2019)  
**Atraumatic laparoscopic intraperitoneal mesh fixation using a new laparoscopic device: an animal experimental study.**  
*Hernia.* <https://doi.org/10.1007/s10029-019-02008-5>
86. Wilson P (2020)  
**Laparoscopic intraperitoneal onlay mesh (IPOM) repair using n-butyl-2-cyanoacrylate (Liquiband Fix8™) for mesh fixation: learning experience and short-medium term results.**  
*Hernia.* <https://doi.org/10.1007/s10029-020-02144-3>
97. Carus T (2021)  
**Die laparoskopische IPOM-Operation bei Nabel- und Bauchwandhernien – Netzfixierung in Klebetechnik.**  
6

## Inguinal Hernia

16. Junge K, Binnebösel M, Kauffmann C, et al (2010)  
**Damage to the spermatic cord by the Lichtenstein and TAPP procedures in a pig model.**  
*Surgical Endoscopy* 25:146-152. <https://doi.org/10.1007/s00464-010-1148-1>
67. Garcia-Pastor P, Porrero-Carro J, et al. (2018)  
**Prospective Multicenter Blinded Randomized Study Comparing PP and PVDF Mesh Implants in Lichtenstein Procedure with Respect to Pain and Recurrence.**  
*JSM Surgical Procedures* 1:
72. Guadalajara Jurado JF, Suárez Grau JM, Bellido Luque JA, et al (2016)  
**Initial experience in laparoscopic bilateral inguinal hernia repair (TEP) with new anatomical mesh with large pore and low weight (Dynamesh Endolap) in short stay (6 months follow-up).**  
*Ambulatory Surgery* 22:
90. Özveri E, Şanlı DET, Yıldırım D, et al (2020)  
**Magnetic resonance visualization of iron-loaded meshes in patients with pain after inguinal hernia repair.**  
*Hernia*. <https://doi.org/10.1007/s10029-020-02168-9>
94. Ramser M, Baur J, Keller N, et al (2021)  
**Robotische Hernienchirurgie: Teil I: Robotische Leistenhernienversorgung (r TAPP). Videobeitrag und Ergebnisse einer Kohortenstudie an 302 operierten Hernien.**  
*Chirurg*. <https://doi.org/10.1007/s00104-021-01425-6>
101. The HerniaSurge Group (2018)  
**International guidelines for groin hernia management.**  
*Hernia*. <https://doi.org/10.1007/s10029-017-1668-x>

## Abdominal Wall Hernia Repair

10. Berger D, Bientzle M (2008)  
**Polyvinylidene fluoride: a suitable mesh material for laparoscopic incisional and parastomal hernia repair!**  
*Hernia* 13:167-172. <https://doi.org/10.1007/s10029-008-0435-4>
14. Berger D, Bientzle M (2006)  
**Principles of laparoscopic repair of ventral hernias.**  
*European Surgery* 38:393-398. <https://doi.org/10.1007/s10353-006-0284-2>
54. Muysoms F, Beckers R, Kyle-Leinhase I (2018)  
**Prospective cohort study on mesh shrinkage measured with MRI after laparoscopic ventral hernia repair with an intraperitoneal iron oxide-loaded PVDF mesh.**  
*Surgical Endoscopy* 32:2822-2830. <https://doi.org/10.1007/s00464-017-5987-x>
56. Köhler G, Pallwein-Prettner L, Koch OO, et al (2015)  
**Magnetic Resonance-Visible Meshes for Laparoscopic Ventral Hernia Repair.**  
*JLS : Journal of the Society of Laparoendoscopic Surgeons* 19:e2014.00175. <https://doi.org/10.4293/JLS.2014.00175>
58. Verbo A, Pafundi P, Manno A, et al (2016)  
**Polyvinylidene Fluoride Mesh (PVDF, DynaMesh®-IPOM) in The Laparoscopic Treatment of Incisional Hernia: A Prospective Comparative Trial versus Gore® ePTFE DUALMESH® Plus.**  
*Surgical technology international* 28:147-151
87. Sánchez-Arteaga A, Tallón-Aguilar L, Tinoco-González J, et al (2020)  
**Use of polyvinylidene fluoride (PVDF) meshes for ventral hernia repair in emergency surgery.**  
*Hernia*. <https://doi.org/10.1007/s10029-020-02209-3>



## Abdominal Wall Hernia Prevention

55. Kohler A, Lavanchy JL, Lenoir U, et al (2019)  
**Effectiveness of Prophylactic Intraperitoneal Mesh Implantation for Prevention of Incisional Hernia in Patients Undergoing Open Abdominal Surgery: A Randomized Clinical Trial.**  
*JAMA Surgery* 154:109. <https://doi.org/10.1001/jamasurg.2018.4221>
74. Bravo-Salva A, González-Castillo AM, Vela-Polanco FF, et al (2019)  
**Incidence of Incisional Hernia After Emergency Subcostal Unilateral Laparotomy: Does Augmentation Prophylaxis Play a Role?**  
*World J Surg.* <https://doi.org/10.1007/s00268-019-05282-7>
89. Pereira JA, Pera M, López-Cano M, et al (2019)  
**Hernias at the Extraction Incision After Laparoscopic Colon and Rectal Resection: Influence of Incision Location and Use of Prophylactic Mesh.**  
*Cirugía Española (English Edition)* 97:20–26

## Parastomal Hernia Repair

9. Berger D, Bientzle M (2007)  
**Laparoscopic Repair of Parastomal Hernias: A Single Surgeon's Experience in 66 Patients.**  
*Diseases of the Colon & Rectum* 50:1668–1673. <https://doi.org/10.1007/s10350-007-9028-z>
12. Berger D (2010)  
**Laparoskopische Reparatur der parastomalen Hernie.**  
*Der Chirurg* 81:988–992. <https://doi.org/10.1007/s00104-010-1933-3>
60. Fischer I, Wundsam H, Mitteregger M, Köhler G (2017)  
**Parastomal Hernia Repair with a 3D Funnel Intraperitoneal Mesh Device and Same-Sided Stoma Relocation: Results of 56 Cases.**  
*World Journal of Surgery* 41:3212–3217. <https://doi.org/10.1007/s00268-017-4130-4>
62. Köhler G, Wundsam H, Pallwein-Prettner L, et al (2015)  
**Magnetic resonance visible 3-D funnel meshes for laparoscopic parastomal hernia prevention and treatment.**  
*European Surgery* 47:127–132. <https://doi.org/10.1007/s10353-015-0319-7>
63. Köhler G, Emmanuel K (2017)  
**Laparoscopic stoma relocation for parastomal hernia treatment by using a magnetic resonance visible three-dimensional implant.**  
*ANZ Journal of Surgery* 87:411–412. <https://doi.org/10.1111/ans.12899>
64. Köhler G, Fischer I, Wundsam H (2018)  
**A Novel Technique for Parastomal Hernia Repair Combining a Laparoscopic and Ostomy-Opening Approach.**  
*Journal of Laparoendoscopic & Advanced Surgical Techniques* 28:209–214.  
<https://doi.org/10.1089/lap.2017.0313>
65. Köhler G, Mayer F, Wundsam H, et al (2015)  
**Changes in the Surgical Management of Parastomal Hernias Over 15 Years: Results of 135 Cases.**  
*World Journal of Surgery* 39:2795–2804. <https://doi.org/10.1007/s00268-015-3187-1>
66. Zhang H, Xie J, Miao J, Wu H (2016)  
**Hybrid Approaches for Complex Parastomal Hernia Repair.**  
*Journal of the College of Physicians and Surgeons Pakistan* 26:72–73
75. Köhler G (2019)  
**Prinzipien und Parallelen der Prävention und Reparatur parastomaler Hernien mit Netzen.**  
*Chirurg*. <https://doi.org/10.1007/s00104-019-01047-z>
77. Szczepkowski M, Skoneczny P, Przywózka A, et al (2015)  
**Leading article: Methods paper New minimally invasive technique of parastomal hernia repair - methods and review.**  
*wiitm* 1:1–7. <https://doi.org/10.5114/wiitm.2015.50052>
78. Tully KH, Roghmann F, Pastor J, et al (2019)  
**Parastomal Hernia Repair With 3-D Mesh Implants After Radical Cystectomy and Ileal Conduit Urinary Diversion - A Single-center Experience Using a Purpose Made Alloplastic Mesh Implant.**  
*Urology* 131:245–249. <https://doi.org/10.1016/j.urology.2019.05.006>

## Hernias

### Parastomal Hernia Repair

92. Bustos-Jiménez M, Martín-Cartes JA (2020)  
**Surgical Treatment of Parastomal Hernias by Using A 3D Mesh.**  
*05:6*
96. Cartes JAM, Bustos-Jiménez M, Tamayo-López MJ (2018)  
**Parastomal Hernia: A More and More Frequent Surgical Challenge.**  
*General Surgery 3:5*

## Parastomal Hernia Prevention

15. Berger D (2007)  
**Prevention of parastomal hernias by prophylactic use of a specially designed intraperitoneal onlay mesh (Dynamesh IPST®).**  
*Hernia* 12:243–246. <https://doi.org/10.1007/s10029-007-0318-0>
59. Conde-Muñoz R, Díez J-L, Martínez A, et al (2017)  
**Preventing parastomal hernias with systematic intraperitoneal specifically designed mesh.**  
*BMC Surgery* 17:. <https://doi.org/10.1186/s12893-017-0237-7>
61. Köhler G, Hofmann A, Lechner M, et al (2016)  
**Prevention of parastomal hernias with 3D funnel meshes in intraperitoneal onlay position by placement during initial stoma formation.**  
*Hernia* 20:151–159. <https://doi.org/10.1007/s10029-015-1380-7>
62. Köhler G, Wundsam H, Pallwein-Prettner L, et al (2015)  
**Magnetic resonance visible 3-D funnel meshes for laparoscopic parastomal hernia prevention and treatment.**  
*European Surgery* 47:127–132. <https://doi.org/10.1007/s10353-015-0319-7>
75. Köhler G (2019)  
**Prinzipien und Parallelen der Prävention und Reparatur parastomaler Hernien mit Netzen.**  
*Chirurg.* <https://doi.org/10.1007/s00104-019-01047-z>
80. López-Borao J, Madrazo-González Z, Kreisler E, Biondo S (2019)  
**Prevention of parastomal hernia after abdominoperineal excision with a prophylactic three-dimensional funnel mesh.**  
*Colorectal Dis* 21:1326–1334. <https://doi.org/10.1111/codi.14738>
88. Mäkäräinen-Uhlbäck EJ, Klintrup KHB, Vierimaa MT, et al (2020)  
**Prospective, Randomized Study on the Use of Prosthetic Mesh to Prevent a Parastomal Hernia in a Permanent Colostomy: Results of a Long-term Follow-up.**  
*Diseases of the Colon & Rectum* 63:678–684. <https://doi.org/10.1097/DCR.0000000000001599>
95. Ammann Y, Widmann B, Sparr M, et al (2021)  
**Prophylactic Funnel Mesh to Prevent Parastomal Hernia in Permanent End Colostomy: A Retrospective Cohort Study.**  
*Colorectal Dis.* <https://doi.org/10.1111/codi.15817>



## Hiatal Hernia Repair

51. Köhler G, Pallwein-Prettner L, Lechner M, et al (2015)  
**First human magnetic resonance visualisation of prosthetics for laparoscopic large hiatal hernia repair.**  
*Hernia* 19:975-982. <https://doi.org/10.1007/s10029-015-1398-x>
71. Weyhe D, Klinge U, Uslar VN, et al (2019)  
**Follow Up Data of MRI-Visible Synthetic Meshes for Reinforcement in Large Hiatal Hernia in Comparison to None-Mesh Repair – A Prospective Cohort Study.**  
*Front Surg* 6:. <https://doi.org/10.3389/fsurg.2019.00017>

## Female Pelvic Organ Prolapse

### DynaMesh®-PR / -PRR

57. Jan H, Ghai V, Thakar R (2018)  
**Simplified Laparoscopic Sacrohysteropexy.**  
*Journal of Minimally Invasive Gynecology* 25:1134. <https://doi.org/10.1016/j.jmig.2018.01.014>

## Female Pelvic Organ Prolapse

### DynaMesh®-PRS

42. Balsamo R, Illiano E, Zucchi A, et al (2018)

**Sacrocolpopexy with polyvinylidene fluoride mesh for pelvic organ prolapse:  
Mid term comparative outcomes with polypropylene mesh.**

*European Journal of Obstetrics & Gynecology and Reproductive Biology* 220:74–78. <https://doi.org/10.1016/j.ejogrb.2017.11.018>

## Female Pelvic Organ Prolapse

### DynaMesh®-PRP

22. Noé KG, Spüntrup C, Anapolski M (2013)  
**Laparoscopic pectopexy: a randomised comparative clinical trial of standard laparoscopic sacral colpo-cervicopexy to the new laparoscopic pectopexy. Short-term postoperative results.**  
*Arch Gynecol Obstet* 287:275–280. <https://doi.org/10.1007/s00404-012-2536-7>
32. Noé K-G, Schiermeier S, Alkatout I, Anapolski M (2015)  
**Laparoscopic Pectopexy: A Prospective, Randomized, Comparative Clinical Trial of Standard Laparoscopic Sacral Colpocervicopexy with the New Laparoscopic Pectopexy—Postoperative Results and Intermediate-Term Follow-Up in a Pilot Study.**  
*Journal of Endourology* 29:210–215. <https://doi.org/10.1089/end.2014.0413>
45. Kale A, Biler A, Terzi H, et al (2017)  
**Laparoscopic pectopexy: initial experience of single center with a new technique for apical prolapse surgery.**  
*International braz j urol* 43:903–909. <https://doi.org/10.1590/s1677-5538.ibju.2017.0070>
84. Noé GK, Schiermeier S, Papathemelis T, et al (2020)  
**Prospective international multicenter pectopexy trial: Interim results and findings post surgery.**  
*European Journal of Obstetrics & Gynecology and Reproductive Biology* 244:81–86. <https://doi.org/10.1016/j.ejogrb.2019.10.022>
98. Noé GK, Schiermeier S, Papathemelis T, et al (2021)  
**Prospective International Multicenter Pelvic Floor Study: Short-Term Follow-Up and Clinical Findings for Combined Pectopexy and Native Tissue Repair.**  
*JCM* 10:217. <https://doi.org/10.3390/jcm10020217>

## Female Pelvic Organ Prolapse

### DynaMesh®-CESA / -VASA

33. Jaeger et al. (2016)  
**Does the Patients Age have an Influence on the Outcome of Cesa (Cervico-Sacropexy) and Vasa (Vagino-Sacropexy) for the Treatment of Urinary Incontinence in Women?**  
*| Open Access | OMICS International*
34. Rajshekhar S, Mukhopadhyay S, Morris E (2016)  
**Early safety and efficacy outcomes of a novel technique of sacrocolpopexy for the treatment of apical prolapse.**  
*International Journal of Gynecology and Obstetrics 0: <https://doi.org/10.1016/j.ijgo.2016.05.007>*
35. Ludwig S, Stumm M, Mallmann P, Jager W (2016)  
**Surgical replacement of the uterosacral-and pubourethral-ligaments as treatment for urgency urinary incontinence.**  
*Austin J Womens Health 3:1019*
36. Joukhadar R, Meyberg-Solomayer G, Hamza A, et al (2015)  
**A Novel Operative Procedure for Pelvic Organ Prolapse Utilizing a MRI-Visible Mesh Implant: Safety and Outcome of Modified Laparoscopic Bilateral Sacropexy.**  
*BioMed Research International 2015:1-9. <https://doi.org/10.1155/2015/860784>*
73. Cassis C, Mukhopadhyay S, Morris E (2019)  
**Standardizing abdominal sacrocolpopexy for the treatment of apical prolapse: One year on.**  
*Int J Gynecol Obstet ijgo.12935. <https://doi.org/10.1002/ijgo.12935>*
85. Rexhepi S, Rexhepi E, Stumm M, et al (2018)  
**Laparoscopic Bilateral Cervicosacropexy and Vaginosacropexy: New Surgical Treatment Option in Women with Pelvic Organ Prolapse and Urinary Incontinence.**  
*Journal of Endourology 32:1058-1064. <https://doi.org/10.1089/end.2018.0474>*



## Female Urinary Incontinence

21. Klinge U, Binneboesel M, Kuschel S, Schuessler B (2007)  
**Demands and properties of alloplastic implants for the treatment of stress urinary incontinence.**  
*Expert Rev Med Devices* 4:349–359. <https://doi.org/10.1586/17434440.4.3.349>
31. Naumann G, Albrich S, Skala C, et al (2012)  
**Single-Incision Slings (SIS) - a New Option for the Surgical Treatment of Female Stress Urinary Incontinence.**  
*Geburtshilfe und Frauenheilkunde* 72:125–131. <https://doi.org/10.1055/s-0031-1298275>
39. Ludwig S, Stumm M, Mallmann P, Jäger W (2016)  
**TOT 8/4: A Way to Standardize the Surgical Procedure of a Transobturator Tape.**  
*BioMed Research International* 2016:1–4. <https://doi.org/10.1155/2016/4941304>
40. Najjari L, Hennemann J, Kirschner-Hermanns R, et al (2014)  
**Visualization of Polypropylene and Polyvinylidene Fluoride Slings in Perineal Ultrasound and Correlation with Clinical Outcome.**  
*BioMed Research International*. <https://doi.org/10.1155/2014/181035>
41. Sabadell J, Larrain F, Gracia-Perez-Bonfils A, et al (2016)  
**Comparative study of polyvinylidene fluoride and polypropylene suburethral slings in the treatment of female stress urinary incontinence: PVDF/polypropylene in suburethral slings.**  
*Journal of Obstetrics and Gynaecology Research* 42:291–296. <https://doi.org/10.1111/jog.12899>
44. Ludwig S, Stumm M (2016)  
**Surgical Treatment of Urgency Urinary Incontinence, OAB (Wet), Mixed Urinary Incontinence, and Total Incontinence by Cervicosacropexy or Vaginosacropexy.**  
*Gynecology & Obstetrics* 6:. <https://doi.org/10.4172/2161-0932.1000404>
49. Najjari L, Gräf CM, Kupec T, et al (2016)  
**Tomographic Ultrasound Imaging to Control the Placement of Tension-Free Transobturator Tape in Female Urinary Stress Incontinence.**  
*BioMed Research International* 2016:1–6. <https://doi.org/10.1155/2016/6495858>
83. Ludwig S, Becker I, Mallmann P, Jäger W (2019)  
**Comparison of Solifenacin and Bilateral Apical Fixation in the Treatment of Mixed and Urgency Urinary Incontinence in Women: URGE 1 Study, A Randomized Clinical Trial.**  
*In Vivo* 33:1949–1957. <https://doi.org/10.21873/invivo.11690>
99. Sabadell J, Pereda-Núñez A, Ojeda-de-los-Santos F, et al (2021)  
**Polypropylene and polyvinylidene fluoride transobturator slings for the treatment of female stress urinary incontinence: 1-Year outcomes from a multicentre randomized trial.**  
*Neurourology and Urodynamics* 40:475–482. <https://doi.org/10.1002/nau.24586>

## Male Urinary Incontinence

81. Costa Cruz DSL da, D´Ancona CAL, Silva Filho WP da, et al (2020)  
**Parameters of 2-Dimensional Perineal Ultrasonography Before and After Male Sling Procedure for Urinary Incontinence After Radical Prostatectomy.**  
*Urology* 136:257–262. <https://doi.org/10.1016/j.urology.2019.10.004>

## Internal test-reports

- TR1. CF\_F02 **“Biocompatibility”**
- TR10. I1\_F03-01\_SIS1\_X **Stability and Elongation** (*bench test*)
- TR11. I1\_F03-02\_SIS1\_X **Porosity and Formstability** (*bench test*)
- TR12. I1\_F03-03\_SIS1\_X **Formstability** (*bench test*)

Some of our products may not be available in your country. Please contact your local distributor for more information.



[www.dyna-mesh.com](http://www.dyna-mesh.com)

hergestellt durch / manufactured by /  
fabriqué par / fabricado por / fabbricato da  
FEG Textiltechnik  
Forschungs- und Entwicklungsgesellschaft mbH  
Prager Ring 70  
52070 Aachen, Germany



Distributed by:

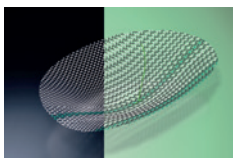
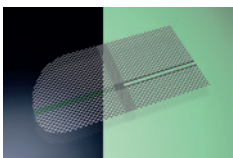
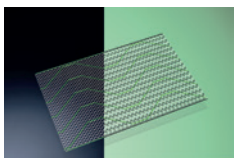
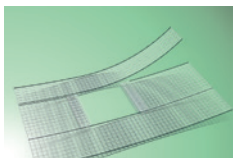
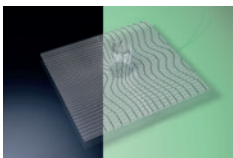
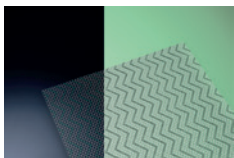
 **DAHLHAUSEN**<sup>®</sup> *Italy*

Via Amerigo Vespucci 33, 84098 Pontecagnano Faiano (SA)

Tel: +39 089 759403 Fax: +39 089 2872995

eMail: [italy@dahlhausen.de](mailto:italy@dahlhausen.de)

website: [www.dahlhausen.de](http://www.dahlhausen.de)



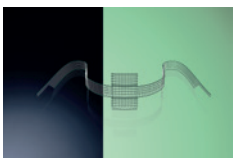
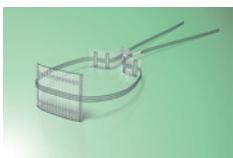
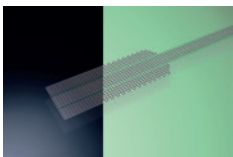
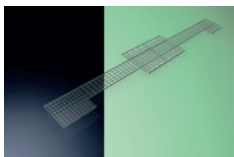
# DynaMesh®

For Every Indication a Specific Solution

## Download Catalogue

■ made  
■ in  
■ Germany

Tailored Implants  
Made of **PVDF**



hergestellt durch / manufactured by: FEG Textiltechnik Forschungs- und Entwicklungsgesellschaft mbH  
Prager Ring 70, 52070 Aachen, Germany · [www.dyna-mesh.com](http://www.dyna-mesh.com)

Distributed by:

 **DAHLHAUSEN®** *Italy*

Via Amerigo Vespucci 33, 84098 Pontecagnano Faiano (SA)

Tel: +39 089 759403 Fax: +39 089 2872995

eMail: [italy@dahlhausen.de](mailto:italy@dahlhausen.de)

website: [www.dahlhausen.de](http://www.dahlhausen.de)



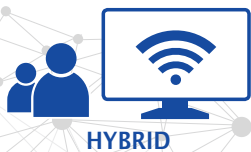
**LiSTO.academy** is a comprehensive platform providing excellent customised surgical education and trainings. Through cooperations with experienced surgeons and renowned experts from around the world, **LiSTO.academy** enables physicians to achieve best patient outcomes using DynaMesh® implants.



**IN-PERSON**



**VIRTUAL**



**HYBRID**

Visit us online:  
[www.listo.academy](http://www.listo.academy)

